

# Infinite Storage.

DicksonOne keeps all of your environmental data organized, safe, and secure.



**DICKSON**

**WINTER 2014**

CD274



# DICKSON MEANS DATA

**And we mean business too.** We know the products, processes, and buildings critical to your monitoring application and vital to your business. For that reason, Dickson has been designing and manufacturing reliable data logging devices for over 90 years and continues to do so today.

## The Road to DicksonOne

**DicksonOne** is an innovative temperature and humidity monitoring system designed specifically from customer feedback on our previous products. Dickson is proud to offer a full line of temperature monitoring equipment that utilize the newest technologies to create great products.

### 1 CHART RECORDERS 1915 to Present

Chart recorders require a pen to write onto the circular chart paper that spins as time passes.

**PROS:** Physical record of conditions. Simple to operate.

**CONS:** Overtime, the cost of charts, pens, and labor to replace them and do visual checks of the readings really adds up!



### 2 DATA LOGGERS 1970s to Present

Data loggers did away with the need to change charts and pens by storing data directly onto the device.

**PROS:** Compact size. More customization. No need to replace charts and pens.

**CONS:** Still must travel to the device to retrieve the data.



## Contents

### Winter 2014

CD274

#### DicksonOne 2-7

##### Data Loggers

- Display Loggers 8
- Touchscreens 9
- Compact Loggers 10-11
- Probes 11
- DicksonOne Mobile App 12
- High Temperature Loggers 12

#### Chart Recorders

- Voltage and Disposable Chart Recorders 13
- Temperature Chart Recorders 14, 16-17
- Humidity and Temperature Chart Recorders 15

#### Thermometers and Indicators 17

##### Pressure Monitors

- Data Loggers 18
- Chart Recorders 19

### 3 WiZARD/WiZARD2 2007 to Present

The WiZARD and WiZARD2 families are the **Dickson** data loggers that introduced wireless transmission of data.

**PROS:** Data is automatically sent back to the central PC. No need to go to the device to retrieve data.

**CONS:** Proprietary equipment. Data access limited to one building. Maximum of 60 loggers per receiver.



### 4 DicksonOne 2013 to ???

**DicksonOne** is the best of the data loggers and wireless monitoring solutions. It offers automated data delivery, as well as true multi-location monitoring.

**BENEFITS:** Data comes to you! Uses your existing WiFi and Ethernet. Unlimited loggers. Unlimited locations. Centralized dashboard. Easy sharing of data. Email, Phone & Text alarms. Up and running in minutes!



So...



# ...Why DicksonOne

**DicksonOne** is the direct result of customer feedback like this:



“WE WANT TO MONITOR  
**MULTIPLE LOCATIONS**  
WITH ONE SYSTEM.”

“WE’RE SPENDING TOO MANY  
**MAN HOURS**  
CHANGING CHARTS AND PENS.”

“WE WANT AN  
**EASIER WAY**  
TO SHARE OUR DATA.”

“WE NEED  
**MORE ROBUST**  
ALARMING CAPABILITIES.”

“PRODUCTS ARE  
**TOO HARD**  
TO SETUP.”

“I NEED TO VIEW  
**MY DATA**  
FROM ANYWHERE.”

# How Do You Want To Be Notified?

**SMS**



**EMAIL**



**PHONE**



**PAGER**



Need More Than One Person To Receive Alarms?

**DicksonOne** Welcome, Matt | Logout

---

[Devices](#)
[Events](#)
[Manage](#)
[Support](#)
[Admin](#)
⌚ Current Time: 4:42:53PM

---

**Alarms for Refrigerator 1** 12276031
⬆ Alarm Delay set to  minutes [Change](#)

[+ Add a New Alarm](#)

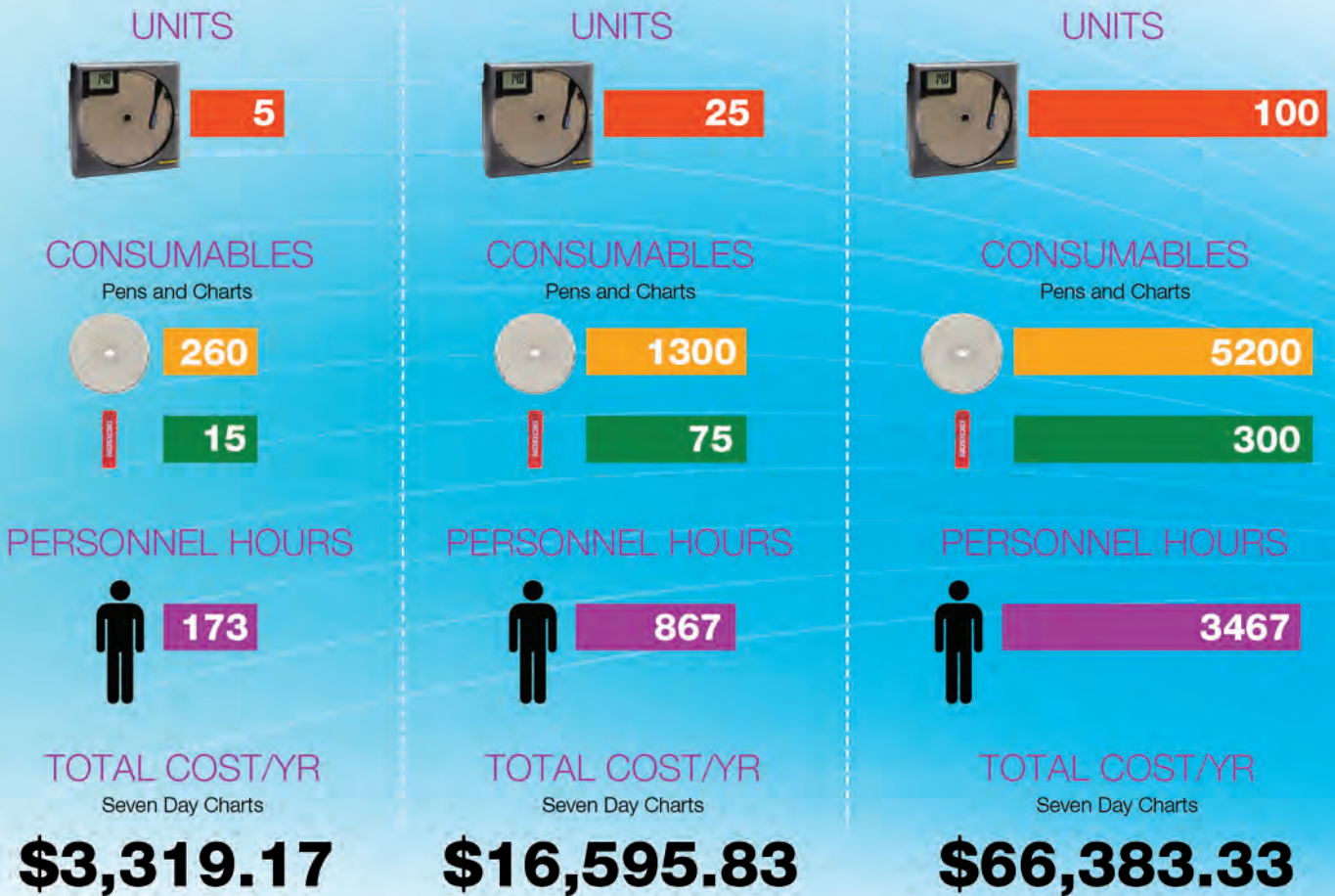
<b>When</b>	Relative Humidity is below 20.0%	<b>Then</b>	☑ Send Email to	msscott@dundermifflin.com	<a href="#">Edit</a> <a href="#">Remove</a>
<b>When</b>	Temperature is below 40.0F	<b>Then</b>	☑ Phone Call to	234-555-1234	<a href="#">Edit</a> <a href="#">Remove</a>
		<b>And</b>	☑ Send Email to	hello@dicksonone.com	
		<b>And</b>	☑ Sound Alarm		

Note: Standard SMS text rates may be applied by your wireless carrier.  
 Add noreply@dicksonone.com to your email's address book to prevent emails going to spam.



# The Cost Of A Chart Recorder

Often times the thought of switching to a new system is a negative one due to the perceived cost. However, have you considered the cost of a chart recorder?



# Calibrations

Calibrations with **DicksonOne** are easier than ever before.

The entire line is compatible with **Replaceable Sensors**.

- **Simple**
- **Fast**
- **Cost Effective**



## STEPS:

- 1** Order a new Replaceable sensor with the appropriate calibration.
- 2** Sit back, relax, and wait for the new sensor to arrive.
- 3** Simply unplug the old sensor and replace it with the new one!

**Voilà! No more sending in your unit for calibration!**

**Certificate of Instrument Calibration and Testing**  
Calibration report shall not be reproduced, except in full, without written authorization from Dickson.

<b>Customer Instrument</b> Dickson Model Number: <b>TH803</b> Serial Number: <b>SAMPLE</b> Approved By: <b>Don Gawel</b> Calibration Date: <b>03/01/2011</b> Calibration Type: <b>3 PT A2LA NIST</b>	<b>Calibration Standards</b> General Eastern Model M3 Ser. #23010951261299 A2LA Model A1811 Ser. #T2472-8284 Probe Ser. #634230	
---	---	--

**Calibration Procedure P1130**  
 The customer instrument was compared to the calibration standard. Drifts and faults were determined, and any necessary mechanical or electronic adjustments were taken. The Dickson calibration system conforms to the requirements of MIL-STD-4562A, ANSI/CSL Z540, and ISO 17025 as appropriate. Recalibration of the customer instrument is recommended within 6-12 months after the unit is placed into service. Any number of factors may cause the calibration from to drift before the recommended interval has expired.  
 This certificate only relates to this specific unit. The unique certificate number equals the model # + serial # + cal date.

Environmental Conditions		72 °F	41 % RH
Calibration Standard Reading	Customer Instrument Reading	Unit Specification	
Humidity (% RH)	Humidity (% RH)	Humidity	
9.5	9.1	± 2% RH	
41.2	41.2	± 2% RH	
86.6	86.2	± 3% RH	
Temperature F (°C)	Temperature F (°C)	Temperature	
5.2 (-14.9)	5.4 (-14.8)	1.8 °F (± 1.0 °C)	
72.5 (22.5)	73.1 (22.8)		
114.5 (45.8)	115.1 (46.2)		

The TH803 has an ISO/IEC 17025 signed NIST Technical note 1207, Guidelines for Calibrating and Expressing the Uncertainty of NIST Measurement Results, estimated measurement uncertainty at 95% CI: K=2 of ±0.7°F and ±1.1% RH.

**FOR YOUR NEXT CALIBRATION NO PHONE CALLS REQUIRED**  
 Fill out and send this form along with your instrument to Dickson. Label the outside of the box with "CCMF" that is your RAR. That's all there is to it!

1. Purchase Order #: \_\_\_\_\_  
 Name: \_\_\_\_\_  
 Phone: **TH803**  
 Model #: **SAMPLE**  
 Serial #: \_\_\_\_\_  
**A 2-Point Deluxe NIST will be performed unless otherwise requested**

2.  1-Point Deluxe NIST Calibration \$156.00  
 3-Point Deluxe NIST Calibration \$209.00  
 3-Point Ultima Deluxe A2LA NIST \$315.00 (with incoming reading)  
 N995 - User selectable NIST Temperature points \$50.00 each (to be selected in addition to one of the above calibration options)  
 N997 - Priority Service \$50.00 (Not available for ULTIMA service)

3. Please return via:  
 Ground Freight\*  
 2nd Day Air\*\*  
 Next Day Air\*\*  
 \*Charges added at factory  
 \*\*Returned UPS 2nd Day unless otherwise requested

4. Ship To: \_\_\_\_\_  
 Bill To: \_\_\_\_\_

**Charts/Pens**  
 Order now and receive them with your calibrated unit!

6 Red Pens	Order No. P222	Price Ea. \$43 pb.
3 Red/3 Blue Pens	Order No. P226	Price Ea. \$43 pb.
Charts* (100 per box)	Order No. C---	Price Ea. \$35 box.

\*Please fill in the chart order number. For a listing of available charts go to [www.dicksondata.com](http://www.dicksondata.com) click on "product search" and select the product type. \*Pen: Accessories.  
 Prices are subject to change.

Let Dickson remind you the next time your unit is due for calibration. Register for our FREE Calibration Club now at [www.dicksondata.com](http://www.dicksondata.com)

**Dickson Calibration Services**  
 938 South Westwood Avenue Addison, Illinois 60101 630-543-3747 Fax 630-543-0498

Page 1 of 1

## Temperature Data Logger

**SM300** Range -4 to 158°F, -20 to 70°C.  
Accuracy  $\pm 0.8^\circ\text{F}$ ,  $\pm 0.44^\circ\text{C}$ .

**SM320\*** Remote Probe. Range with Probe  
-300 to 2000°F, -184 to 1093°C. Accuracy  $\pm 1.8^\circ\text{F}$ ,  $\pm 1.0^\circ\text{C}$ .

**SM325\*** Two Remote Probes. Range with Probe  
-300 to 2000°F, -184 to 1093°C. Accuracy  $\pm 1.8^\circ\text{F}$ ,  $\pm 1.0^\circ\text{C}$ .

**SM420** Remote Probe. Range with Probe  
-50 to 350°F, -45 to 176°C. Accuracy  $\pm 0.5^\circ\text{F}$ ,  $\pm 0.28^\circ\text{C}$ .



SM325 Temperature Model With  
Two Remote Probes

**Calibration Options Available**

Not for use over 95% RH. Software required and sold separately. For software and other accessories, please call **800.323.2448** or visit [www.DicksonData.com](http://www.DicksonData.com).

\*Temp Range using standard K-T-C probe:  
-300 +500°F (A203 probe required for +2000°F range).

## Temperature/Humidity Data Logger

Industries & Applications

- Warehouses
- Archives
- Surgical Suites
- Laboratories

**TM320** Range -4 to 158°F, -20 to 70°C. Accuracy  $\pm 0.8^\circ\text{F}$ .

**TM325** Remote Probe. Range -40 to 185°F, -40 to 85°C.  
Accuracy  $\pm 0.8^\circ\text{F}$ .

**Calibration Options Available**



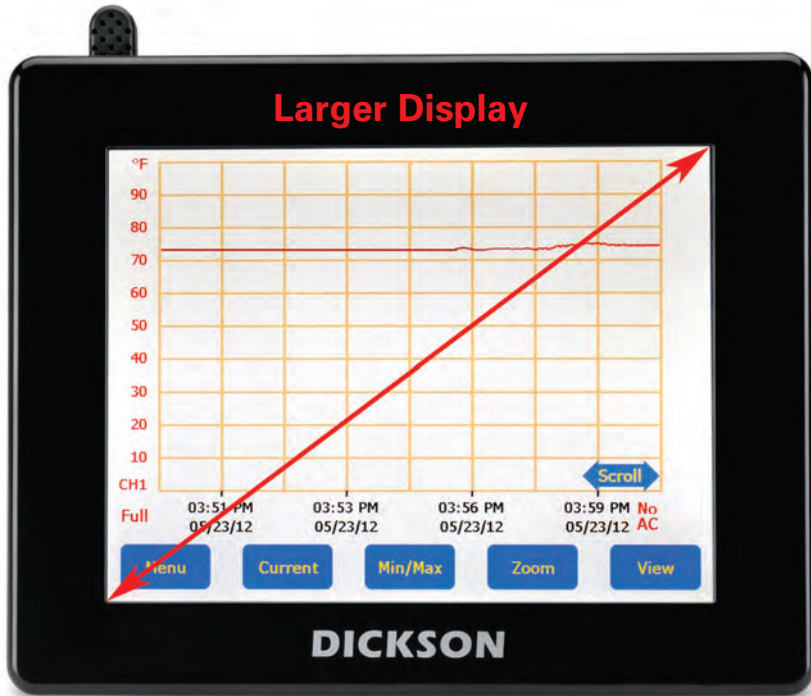
TM320 Temperature and Humidity Model

### DID YOU KNOW?

Most Fortune 1000 companies use **Dickson** to monitor their critical data.

**Call 630.543.3747**  
to talk to a specialist now.





## Digital Graph Displays Trends

### Full control at your fingertips!

- No running back to your PC to see data. Everything you need at the touch of a finger!
- Jumbo 4.9" x 6.4" touchscreens
- Zoom and scroll with the touch of a finger
- Audible/visual alarms
- USB and FLASH card data download
- Rechargeable Backup Battery
- Optional Display Lock
- Pre-Calibrated Sensor Compatible

### Calibration Options Available



MODEL	REMOTE PROBE	PROBE TYPE	TEMPERATURE RANGES	ACCURACY	RELAYS
<b>TEMPERATURE/HUMIDITY</b>					
FH625	Optional	Temp/RH PCS*	-40°F to 185°F (-40° to 85°C)	±0.8°F, ±0.45°C	•
FH635	Optional	Temp/RH PCS*	-40°F to 185°F (-40° to 85°C)	±0.8°F, ±0.45°C	
<b>TEMPERATURE</b>					
FT600	Optional	Temp PCS*	0 to 122°F (-17° to 50°C)	±0.8°F, ±0.45°C	•
FT620	1	KT/C	-300°F to 2000°F (-184° to 1093°C)	±1.8°F, ±1°C	
FT630	2	KT/C	-300°F to 2000°F (-184° to 1093°C)	±1.8°F, ±1°C	
FT625	•	Thermistor	-40°F to 300°F (-40° to 148°C)	±0.8°F, ±0.45°C	
FT640	1	Thermistor/Glycol	-40°F to 158°F (-40° to 70°C)	±1.2°F, ±0.67°C	
FT645	2	Thermistor/Glycol	-40°F to 158°F (-40° to 70°C)	±1.2°F, ±0.67°C	
FT660	•	RTD	-148°F to 350°F (-100° to 176°C)	±0.5°F, ±0.28°C	

\*Pre-Calibrated Sensor

For more information, please visit [www.DicksonData.com](http://www.DicksonData.com).

## Temperature and Temperature/Humidity Data Logger

### Start/Stop for precision reading!

#### Features

- LCD display of current and MIN/MAX readings
- High-speed USB connectivity
- User-replaceable battery

**SP425** Temperature Logger. Digital Display. Accuracy  $\pm 1.2^{\circ}\text{F}$ ,  $\pm 0.67^{\circ}\text{C}$ . Range -4 to 158°F, -20 to 70°C.  
**TP425** Temperature and Humidity Logger. Digital Display. Accuracy  $\pm 0.8^{\circ}\text{F}$ ,  $\pm 0.45^{\circ}\text{C}$ . Range -4 to 158°F, -20 to 70°C.

### Calibration Options Available



SP425 Temperature Model



SP125

## Temperature and Temperature/Humidity Data Logger

### Great for shipping or moving!

#### Features

- High/low alarm
- High-speed USB connectivity
- User-replaceable battery

**SP125** Temperature Logger. Accuracy  $\pm 1.2^{\circ}\text{F}$ ,  $\pm 0.67^{\circ}\text{C}$ . Range -10 to 176°F, -23 to 80°C.  
**SP175** Temperature Logger with Thermocouple Probe. Accuracy  $\pm 1.8^{\circ}\text{F}$ ,  $\pm 0.1^{\circ}\text{C}$ . Range -300 to 2000°F, -30 to 50°C. A203 Probe required for +500°F.  
**TP125** Temperature and Humidity Logger. Accuracy  $\pm 0.8^{\circ}\text{F}$ ,  $\pm 0.45^{\circ}\text{C}$ . Range -10 to 176°F, -23 to 80°C.

### Calibration Options Available

Software required and sold separately. For software and other accessories, please call **800.323.2448** or visit **www.DicksonData.com**.

\*Temp Range using standard K-TC probe: -300 +500°F (A203 probe required for +2000°F range).

## Compact-Sized Data Loggers

**Ideal when space is a concern!**

Features

- USB connection
- Economical 12-pack
- Six month battery life
- Ranges -4 to +158°F (-20 to +70°C)
- Accuracy  $\pm 1.8^\circ\text{F}$  ( $\pm 1^\circ\text{C}$ )

**SK550** Temperature. Pack of twelve.

**TK550** Temperature & Humidity. Pack of twelve.

Software required and sold separately. For software and other accessories, please call **800.323.2448** or visit **www.DicksonData.com**.



Pack of 12

## Add an Optional Probe to your Temperature Unit!



**D617** 10' K-TC Straight Extension Cable



**D605** 4" Piercing Probe



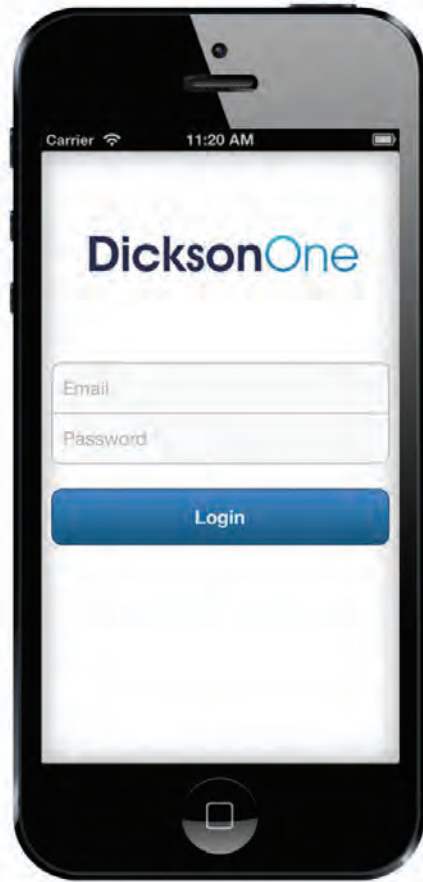
**A203** 6" High Temperature Immersion Probe

## DicksonOne Mobile App for iPhone

By Dickson / Unigage, Inc.

- A great tool for existing DicksonOne customers
- Browse all devices and locations
- Detailed channel display for seeing current data
- Graphs for viewing current trends and historical data

**Requirements:** Compatible with iPhone 3GS, 4, 4S, 5, 5S, iPad, and iPod touch 3rd, 4th, and 5th generations. Required iOS 6.1 or later. This app is optimized for the iPhone.



**FREE**

in the iTunes App Store

## Stainless Steel Watertight Temperature Data Loggers

**New generation of high temperature data logging!**

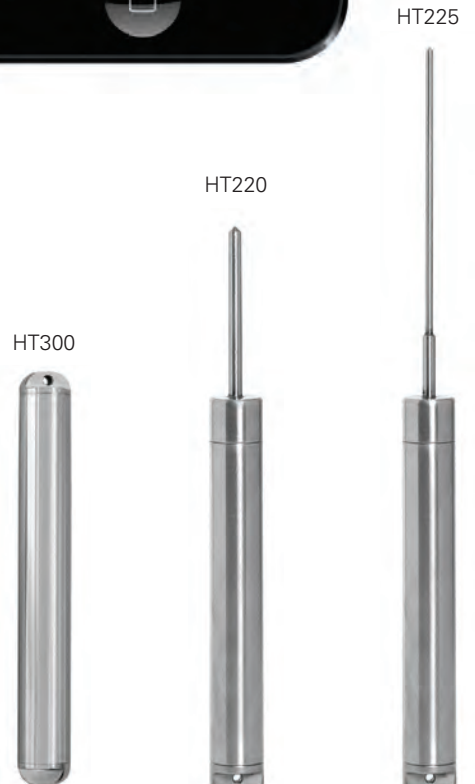
Features

- User-replaceable battery
- USB download capability
- Reinforced probe on the HT225 to prevent breakages
- IP68 rating
- Range: -40 to 257°F, -40 to 125°C

**Calibration Options Available**

MODEL	LOGGER LG	LOGGER DIA	PROBE LG	PROBE DIA
HT300	5.36"	0.75"		
HT220	7.72"	0.75"	2.36"	0.19"
HT225	10.24"	0.75"	4.88"	0.11"

Software required and sold separately. For software and other accessories, please call **800.323.2448** or visit [www.DicksonData.com](http://www.DicksonData.com).



## Voltage Chart Recorder

### ET855

#### Features

- Audible/visual alarm
- Large digital display
- Two screw terminal connectors on the back of the instrument for easy connection of the input transmitter

CHART RANGE	7-DAY CHART	24-HR CHART	31-DAY CHART
0 to +100	C412	C410	C409
0 to +1000	C440	C441	
0 to +200	C436	C456	
0 to +14	C453	C457	
0 to +150	C435	C425	
0 to +300	C431	C422	
-10 to +10	C405	C495	
-150 to +250	C452	C442	

Charts sold separately. For charts and accessories, please call **800.323.2448** or visit [www.DicksonData.com](http://www.DicksonData.com).

## Disposable Recorder

**One-time use! This disposable temperature recorder is perfect for monitoring goods while in transit.**

Multiple features tailored for shipping needs:

- Failsafe start-up and pull out start tab
- Tamper-proof crimped seal
- Shock and vibration protection
- Low cost shipping alternative

MODEL	TEMPERATURE RANGES	RECORDING TIME
D301	-20 to 100°F • -30 to 37.5°C	10 Day
D302	-20 to 100°F • -30 to 37.5°C	20 Day
D307	-20 to 100°F • -30 to 37.5°C	40 Day
D309	-20 to 100°F • -30 to 37.5°C	75 Day

D301

### DID YOU KNOW?

**Dickson** has a team of specialists with which you can discuss your application and find the product that best suits your needs.

**Call 630.543.3747**  
to talk to a specialist now.



ET855



## 8 Inch Temperature Chart Recorder

Easy-to-read chart lets you see temperature details, not just trends!

### Industries & Applications

- Ovens
- Warehouses
- Food Processing
- Archives
- Laboratories
- Health - Blood storage, Dialysis Centers, Medical Centers



### MODELS AND FEATURES

**KT8P0** Probe. Battery operated.

**KT8P2** Probe. Display.

**KT8P3** Probe. Display. Alarm. **BEST SELLER.**

**KT856** 2 Probes. Display. Alarm. Relays.

ALL MODELS HAVE THE FOLLOWING RANGES:

- 50 to +50°F/C • -20 to 20°F/C • 0 to 100°F/C
- 0 to 150°F/C • 0 to 250°F/C • 0 to 500°F/C
- 0 to 1000°F/C • 0 to 2000°F



KT8P3

Charts sold separately. For charts and accessories, please call 800.323.2448 or visit [www.DicksonData.com](http://www.DicksonData.com).

## 6 Inch Temperature Chart Recorder

Easy-to-read chart lets you see temperature details, not just trends!

### Industries & Applications

- Refrigerators • Storage • Clean Rooms • Laboratories
- Pharmaceuticals • Medical Equipment

### MODELS AND FEATURES

**KT621** Probe.

**KT622** Probe. Display. **BEST SELLER.**

**KT625** Probe. Display. Alarm. Relays.

ALL MODELS HAVE THE FOLLOWING RANGES:

- 100 TO 0°F/C • -50 TO 0°F/C • -50 TO +50°F/C
- 0 TO 50°F/C • 0 TO 100°F/C • 50 TO 100°F/C
- 0 TO 250°F/C • 0 TO 500°F/C



KT622

### DID YOU KNOW?

Dickson has over 10 different probe types to meet your specific monitoring needs.

Call 630.543.3747 to talk to a specialist now.

## 8 Inch Temperature & Humidity Chart Recorder

Easy-to-read chart lets you see temperature and humidity details, not just trends!

### Industries & Applications

- Pharmaceuticals
- Archives
- Laboratories & Clean Rooms
- Warehouses
- Health - Blood storage, Dialysis Centers, Medical Centers



### MODELS AND FEATURES

**TH8P0** Battery Operated.

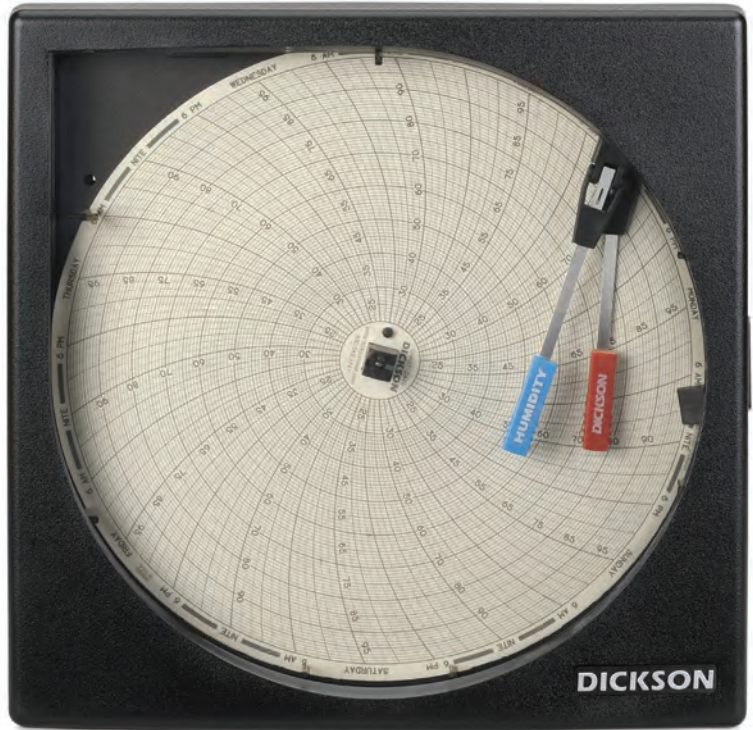
**TH8P2** Display.

**TH8P3** Display. Alarm. Probe. **BEST SELLER.**

**TH8P5** Display. Alarm. Probe. Relays.

RANGES	MODELS
32 to 120°F	TH8P0
0 to 50°C	TH8P0
-20 to 120°F	TH8P2, TH8P3, TH8P5
-20 to 50°C	TH8P2, TH8P3, TH8P5
40 to 110°F	TH8P2, TH8P3, TH8P5
5 to 40°C	TH8P2, TH8P3, TH8P5
0 to 185°F	TH8P3, TH8P5

TH8P0



Charts sold separately. For charts and accessories, please call 800.323.2448 or visit [www.DicksonData.com](http://www.DicksonData.com).

## 6 Inch Temperature & Humidity Chart Recorder

Easy-to-read chart lets you see temperature details, not just trends!

### Industries & Applications

- Ovens • Warehouses • Food Processing • Archives • Labs
- Health - Blood storage, Dialysis Centers, Medical Centers

### MODELS AND FEATURES

**TH621** Probe.

**TH622** Display.

**TH623** Probe. Display. Alarm. **BEST SELLER.**

ALL MODELS HAVE THE FOLLOWING RANGES:

32 to 100°F • 0 to 50°C

TH623

All Temperature and Humidity Chart Recorders are NOT for use over 95% RH.

### DID YOU KNOW?

If you don't like changing **Charts and Pens** we have a number of easier solutions.

**Call 630.543.3747** to talk to a specialist now.





SL4100 Temperature Model

Charts sold separately. For charts and accessories, please call 800.323.2448 or visit [www.DicksonData.com](http://www.DicksonData.com).

## 4 Inch Temperature Chart Recorder

### Designed with simplicity in mind!

Easy-to-use, battery operated and portable

- Digital display
- 24 hour / 7 day recording time
- Wall mount
- Battery door
- Hinged door

Applications

- Refrigerators
- Warehouses
- Freezers
- Laboratories



### Calibration Options Available

MODEL	DIGITAL DISPLAY	TEMPERATURE RANGES
SL4350	•	-22 to 122°F • -30 to 50°C
SL4100	•	0 to 100°F • -18 to 37°C



VFC70

## Vaccine Chart Recorder

### VFC70

Features

- Easy-to-read special vaccine chart with circular bands highlighting the acceptable vaccine ranges of 35-46°F, 2-8°C
- LCD display shows current temperature for quick reference
- Fahrenheit/Celsius Selectable

### Calibration Options Available

Charts sold separately. For charts and accessories please call 800.323.2448 or visit [www.DicksonData.com](http://www.DicksonData.com).

### DID YOU KNOW?

With **DicksonOne** you can create as many email and text alarms as you need and send them to as many people as you want.

**Call 630.543.3747**  
to talk to a specialist now.





SC367

## 3 Inch Mini Temperature Chart Recorder

**Ideal when space is a concern!**

Applications

- Refrigerators
- Clean Rooms
- Transportation
- Storage

MODEL	TEMPERATURE RANGES
SC367	-14 to 32°F • -25 to 0°C
SC377	4 to 50°F • -15 to 10°C
SC386	22 to 68°F • -5 to 20°C
SC387	50 to 96°F • 10 to 35°C
SC397	76 to 122°F • 25 to 50°C

Charts sold separately. For charts and accessories, please call 800.323.2448 or visit [www.DicksonData.com](http://www.DicksonData.com).

## Touchscreen Hand-Held Indicator

Features

- Instant temperature data
- No-Slip silicone cover
- Battery powered

**TC700** Temperature. Piercing K-TC Probe.

**TH700** Temperature and Humidity. Replaceable Sensor.



TC700 with Probe



## Vaccine Alarm Thermometer

**MM120/125**

Features

- LCD display shows current temperature, MIN/MAX temperatures, uses visual alert when in alarm mode and battery level indicator
- High/Low alarms
- Temperature range -58 to ±122°F (-50 to 50°C)

**MM120** One Probe.

**MM125** Two Probes.

**Calibration Options Available**



MM125 Two Probe Temperature Indicator

## Rugged Utility Pressure Data Logger



### Compact and discreet!

This data logger fits in toolboxes, tight corners, or in wide open spaces without attracting attention. Built for real-world water and gas pressure monitoring.

- Water resistant case
- 3 year battery
- Unobtrusive design
- Fits easily in a toolbox
- Pressure sensor includes built in diaphragm seal.
- USB Connection

**PR150** 0-100 PSI

**PR350** 0-300 PSI

### Calibration Options Available

Software required and sold separately. For more information, please visit [www.DicksonData.com](http://www.DicksonData.com).

## Pressure Data Logger

### User-friendly features!

- One-second sampling rate
- User-replaceable battery
- Pressure sensor includes built-in diaphragm seal
- Display, USB connectivity, FLASH memory downloads
- IP68 case
- Optional delayed start

- A.** Digital display
- B.** USB
- C.** FLASH memory card
- D.** Battery
- E.** Splashproof case

**PR125** Range 0 to 100 PSI.

**PR325** Range 0 to 300 PSI.

**PR525** Range 0 to 500 PSI.



PR325

### Calibration Options Available

## 8 Inch Pressure Chart Recorder

### Large, easy-to-read chart!

#### Features

- Rugged low-maintenance design features
- Single AA battery power
- Corrosion-resistant case
- 7-day or 24-hour operation
- Keyhole slot for wall mount
- Splashproof case with an IP rating of 66
- 1/4 inch NPT Connector

<b>PW860</b> 7-day.	0 to 100 PSI.
<b>PW861</b> 24-hour.	0 to 100 PSI.
<b>PW864</b> 7-day.	0 to 200 PSI.
<b>PW865</b> 24-hour.	0 to 200 PSI.
<b>PW866</b> 7-day.	0 to 300 PSI.
<b>PW867</b> 24-hour.	0 to 300 PSI.
<b>PW875</b> 24-hour.	0 to 1000 PSI.

### Calibration Options Available



PW875

## 4 Inch Pressure Chart Recorder

### Compact and durable design!

#### Features

- Operates up to one full year on a single AA battery
- 1/4 inch NPT connection
- For applications where splashproof IP rating is not required
- 7-day or 24-hour selectable

<b>PW470</b>	0 to 100 PSI.
<b>PW474</b>	0 to 200 PSI.
<b>PW476</b>	0 to 300 PSI.
<b>PW479</b>	0 to 500 PSI.

### Calibration Options Available



PW470

Charts sold separately. For charts and accessories, please call 800.323.2448 or visit [www.DicksonData.com](http://www.DicksonData.com).

# DICKSON

Dickson  
930 South Westwood Avenue  
Addison, Illinois 60101-4917

800 323 2448 tel  
800 676 0498 fax  
www.DicksonData.com

PRSRT. STD.  
U.S. Postage  
**PAID**  
The Dickson  
Company

## WE'RE READY TO TAKE YOUR ORDER!

1-800-323-2448 or online at [www.DicksonData.com](http://www.DicksonData.com)



SIMPLY SCAN THE CODE  
WITH YOUR SMARTPHONE  
TO CALL US!



## Replaceable Sensors

- Don't be without your logger
- Simply replace your old sensor with a new one and you're calibrated
- Compatible with new DicksonOne, WiZARD2 and new Touchscreen units

Visit [dicksondata.com/rs](http://dicksondata.com/rs) for more information

## DicksonOne

Access your temperature and humidity data 24/7, on any device with an internet connection, anywhere you are.



See pages 2-7 or visit [DicksonOne.com](http://DicksonOne.com) for more information on DicksonOne.

### DID YOU KNOW?

**DicksonOne** is now in the cloud. Find out what the cloud can do for you.

**Call 630.543.3747**  
to talk to a specialist now.

CONNECT WITH US:

