



2014 SHORT FORM CATALOG

Digital Indicators & Controllers



flow



level



temperature



pressure



PRECISION DIGITAL CORPORATION

Celebrating 40 years of innovation

We are thankful for our customers' support and trust over the past 40 years. Customer satisfaction has been and remains our number one priority. We strive to provide practical solutions to a diverse range of industrial applications, and to make these processes operate more intelligently and efficiently. We continue to engineer innovative new products and implement new technologies to help us meet this goal.

Jeffrey L. Peters
President

DIGITAL PANEL METERS

PD6000 PROVu® Process Meter	6
PD6060 PROVu® Dual-Input Process Meter.....	6
PD6080 PROVu® Super Snooper Modbus Scanner.....	7
PD6081 PROVu® Feet & Inches Super Snooper Modbus Scanner.....	7
PD6088 PROVu® Super Snooper Modbus Scanner.....	8
PD6089 PROVu® Feet & Inches Super Snooper Modbus Scanner.....	8
PD6100 PROVu® Strain Gauge Meter.....	9
PD6200 PROVu® Analog Input Flow Rate/Totalizer.....	9
PD6210 PROVu® Analog Input Batch Controller.....	10
PD6262 PROVu® Analog Dual-Input Rate/Totalizer.....	10
PD6300 PROVu® Pulse Input Flow Rate/Totalizer.....	11
PD6310 PROVu® Pulse Input Batch Controller.....	11
PD6363 PROVu® Pulse Dual-Input Rate/Totalizer.....	12
PD7000 PROVu® Temperature Meter.....	12
PD765 X2 Trident X2 Process & Temperature Meter.....	13
PD765 Trident Process & Temperature Meter.....	13
PD603 Sabre P Process Meter.....	14
PD644 Javelin D High-Voltage DC Meter.....	14
PD743 Sabre T Temperature Meter.....	14
PD865 Snooper Modbus® Serial Input Meter.....	14

ANNUNCIATORS & SCANNERS

PD138 Minimax® II Temperature & Process Scanner.....	15
PD154 Vigilante® II 4-Point Alarm Annunciator.....	15
PD158 Vigilante® II 8-Point Alarm Annunciator.....	15
PDS178 Temperature Scanning System.....	15

SOFTWARE / SERIAL ACCESSORIES

MeterView® Pro Software For PROVu® Series.....	16
ScanView Software For PROVu® Super Snooper Modbus Scanners..	17
MeterView® Software For Trident Series.....	17
MeterView® EX Software For PD6830 & PD6730.....	18
PROVu® Accessories.....	19
Trident Accessories.....	19
MeterView® EX Adapter.....	19
Serial Converters.....	19

NEMA 4 & 4X ENCLOSURES

Serial Converters.....	20
------------------------	----

LOOP-POWERED METERS

PD662 Survivor NEMA 4X Process Meter.....	21
PD683 Loop Leader® Process Meter.....	21
PD684 Loop Leader® Rate/Totalizer.....	22
PD685 NEMA 4X Process Meter.....	22
PD686 NEMA 4X Process Meter.....	22
PD688 Loop Leader® Process Meter.....	23
PD689 Loop Leader® Rate/Totalizer.....	23

FIELD MOUNT INDICATORS

PD6700 Vantageview Process Meter.....	24
PD6701 Vantageview Feet & Inches Level Meter.....	25
PD6720 Vantageview Analog Input Flow Rate/Totalizer.....	25
PD6730 Vantageview Pulse Input Flow Rate/Totalizer.....	26
PD6730X Vantageview Super Snooper Modbus Scanner.....	26
PD6730X Vantageview F&I Super Snooper Modbus Scanner.....	27
PD6770 Vantageview Large Display Meter.....	27

EXPLOSION-PROOF INSTRUMENTS

PD663 ProtEX-Lite Process Meter.....	28
PD6800 ProtEX-Pro Process Meter.....	28
PD6801 ProtEX-F&I Feet & Inches Level Meter.....	29
PD6820 ProtEX-RTA Analog Input Flow Rate/Totalizer.....	29
PD6830 ProtEX-RTP Pulse Input Flow Rate/Totalizer.....	30
PD6870 ProtEX-FarVu Large Display Meter.....	30
PD6830X ProtEX-MFI F&I Super Snooper Modbus Scanner.....	31
PD6830X ProtEX-MS2 Super Snooper Modbus Scanner.....	31
PD8-154 ProtEX-MAX 4-Point Annunciator.....	32
PD8-158 ProtEX-MAX 8-Point Annunciator.....	32
PD8-6000 ProtEX-MAX Process Meter.....	33
PD8-6060 ProtEX-MAX Dual-Input Process Meter.....	33
PD8-6080 ProtEX-MAX Super Snooper Modbus Scanner.....	34
PD8-6081 ProtEX-MAX F&I Super Snooper Modbus Scanner.....	34
PD8-6100 ProtEX-MAX Strain Gauge Meter.....	35
PD8-6200 ProtEX-MAX Analog Input Rate/Totalizer.....	35
PD8-6210 ProtEX-MAX Analog Input Batch Controller.....	36
PD8-6262 ProtEX-MAX Analog Dual-Input Rate/Totalizer.....	36
PD8-6300 ProtEX-MAX Pulse Input Rate/Totalizer.....	37
PD8-6310 ProtEX-MAX Pulse Input Batch Controller.....	37
PD8-6363 ProtEX-MAX Pulse Dual-Input Rate/Totalizer.....	38
PD8-7000 ProtEX-MAX Temperature Meter.....	38
PD8-765 ProtEX-MAX Process & Temperature Meter.....	39

MULTI-CHANNEL CONTROLLERS

PD940 ConsoliDator 4 Four-Channel Controller (Wall).....	40
PD941 ConsoliDator 4 Four-Channel Controller (Panel).....	40
PD980 ConsoliDator 8 Eight-Channel Controller (Wall).....	40
PD981 ConsoliDator 8 Eight-Channel Controller (Panel).....	40

LARGE DISPLAY PROCESS METERS

PD650 2.3" (57.3 mm) Large Display Process Meter.....	41
PD655 1.0" (25.4 mm) Large Display Process Meter.....	41

TEMPERATURE CONTROLLERS

PD540 Nova Series Digital PID Controllers.....	42
PD550 Nova Series Ramp & Soak Controllers.....	42
PD560 Nova Series Digital Meters.....	42
PD570 Nova Series Limit Controllers.....	42

ADDITIONAL PRODUCTS

PD9500 Precision Calibrator.....	43
PDA1500 High VAC/VDC to Logic Level Converter.....	43

Disclaimer

The information contained in this document is subject to change and correction without notice. Precision Digital Corporation makes no representations or warranties with respect to the contents hereof, and specifically disclaims any implied warranties of merchantability or fitness for a particular purpose.

© 2014 Precision Digital Corporation. All rights reserved.

What's New



PD6700
Vantageview Field-Mount
Process Meter



PD6701
Vantageview Field-Mount
Feet & Inches Level Meter



PD6720
Vantageview Field-Mount
Analog Input Flow Rate/Totalizer



PD6770
Vantageview Field-Mount
Large Display Process Meter



PD6080
PROVu® Modbus Scanner with
PDA1485 Adapter



PD6081
PROVu® Ft & In Modbus
Scanner with PDA1485 Adapter



PD8-6081
ProtEX-MAX Ft & In Modbus
Scanner with Built-in RS-485



MeterView® EX
PC Programming Software for
PD6730 and PD6830



ScanView
PC Programming Software
for PROVu® Modbus Scanners



flow



level



temperature



pressure



PD6730

Vantageview Field-Mount
Pulse Input Flow Rate/Totalizer



PD6730X

Vantageview Field-Mount
Modbus Scanner



PD6730X

Vantageview Field-Mount
Feet & Inches Modbus Scanner



PD6088

PROVU® Modbus Scanner with
Built-in RS-485



PD6089

PROVU® Ft & In Modbus
Scanner with Built-in RS-485



PD8-6080

ProtEX-MAX Modbus Scanner
with Built-in RS-485



PDA1011

Dual Analog Output Expansion
Module for PROVU® Series



PDA8068

USB Serial Adapter for
PD6730 and PD6830



Training Videos

Trident Tutorial Videos
www.predig.com/videos

PD6000

PROVu® Process Meter

PROCESS

Quick Overview

Input: 0-20 mA, 4-20 mA; ± 10 VDC (0-5, 1-5, 0-10 V); Modbus PV (slave)
Display: Dual-line 6-digit, 0.60" (15 mm) & 0.46" (12 mm)
Case: 1/8 DIN, NEMA 4X/IP65
Power: 85-265 VAC or 12/24 VDC option
Operating Temperature: -40 to 65°C

Features

- Dual-scale for level applications - single input
- Signal input conditioning for flow & round horizontal tanks
- 32-point, square root, or exponential linearization
- Multi-pump alternation control
- On-board digital input
- Programmable function keys
- Isolated 24 VDC @ 200 mA transmitter power supply
- Modbus® RTU communication protocol

Free Software Available

MeterView Pro: Configure, monitor, and datalog from a PC. Requires serial communication adapter.



PROVu®
SERIES



Options

- 4-20 mA output with isolated 24 VDC @ 40 mA power supply
- 2 or 4 form C internal relays
- External 4-relay and digital I/O expansion modules
- RS-232, RS-485 serial communications
- SunBright display models

PD6060

PROVu® Dual-Input Process Meter

DUAL-INPUT
PROCESS

PROVu®
SERIES



Quick Overview

Input: Dual 0-20 mA, 4-20 mA; ± 10 VDC (0-5, 1-5, 0-10 V); Modbus PV (slave)
Display: Dual-line 6-digit, 0.60" (15 mm) & 0.46" (12 mm)
Case: 1/8 DIN, NEMA 4X/IP65
Power: 85-265 VAC or 12/24 VDC option
Operating Temperature: -40 to 65°C

Features

- Addition, difference, absolute difference, average, multiplication, division, min of A or B, max of A or B, draw, weighted average, and ratio math functions
- Signal input conditioning for flow & round horizontal tanks
- On-board digital input
- Programmable function keys
- Isolated 24 VDC @ 200 mA transmitter power supply
- Modbus® RTU communication protocol

Free Software Available

MeterView Pro: Configure, monitor, and datalog from a PC. Requires serial communication adapter.

Options

- 4-20 mA output with isolated 24 VDC @ 40 mA power supply
- 2 or 4 form C internal relays
- External 4-relay, digital I/O, & dual 4-20 mA out modules
- RS-232, RS-485 serial communications
- SunBright display models

PD6080

PROVu® Super Snooper Modbus Scanner

MODBUS SCANNER

Quick Overview

Input: Modbus® RTU;
Dual 0-20 mA, 4-20 mA, ±10 VDC (0-5, 1-5, 0-10 V)
Display: Dual-line 6-digit, 0.60" (15 mm) & 0.46" (12 mm)
Case: 1/8 DIN, NEMA 4X/IP65
Power: 85-265 VAC or 12/24 VDC option
Operating Temperature: -40 to 65°C

Features

- Master, slave, or snooper mode
- Scan up to 16 PVs
- Includes PDA1485 RS-485 communications module
- 4-20 mA analog output option (up to three)
- On-board digital input
- Programmable function keys
- Isolated 24 VDC @ 200 mA transmitter power supply
- Modbus® RTU communication protocol

Free Software Available

ScanView: Configure, monitor, and datalog from a PC.
Requires serial communication adapter.



PROVu®
SERIES



Options

- 4-20 mA output with isolated 24 VDC @ 40 mA power supply
- 2 or 4 form C internal relays
- External 4-relay, digital I/O, & dual 4-20 mA out modules
- RS-232 serial communications
- SunBright display models

PD6081

PROVu® Feet & Inches Super Snooper Modbus Scanner

FEET & INCHES
MODBUS SCANNER



PROVu®
SERIES



Quick Overview

Input: Modbus® RTU;
Dual 0-20 mA, 4-20 mA, ±10 VDC (0-5, 1-5, 0-10 V)
Display: Dual-line 6-digit, 0.60" (15 mm) feet & inches upper display, & 0.46" (12 mm) lower display
Case: 1/8 DIN, NEMA 4X/IP65
Power: 85-265 VAC or 12/24 VDC option
Operating Temperature: -40 to 65°C

Features

- Master, slave, or snooper mode
- Scan multiple PVs
- Includes PDA1485 RS-485 communications module
- 4-20 mA analog output option (up to three)
- On-board digital input
- Programmable function keys
- Isolated 24 VDC @ 200 mA transmitter power supply
- Modbus® RTU communication protocol

Free Software Available

ScanView: Configure, monitor, and datalog from a PC.
Requires serial communication adapter.

Options

- 4-20 mA output with isolated 24 VDC @ 40 mA power supply
- 2 or 4 form C internal relays
- External 4-relay, digital I/O, & dual 4-20 mA out modules
- RS-232 serial communications
- SunBright display models

PD6088

ProVu® Super Snooper Modbus Scanner

MODBUS SCANNER

Quick Overview

Input: Modbus® RTU;
Display: Dual-line 6-digit, 0.60" (15 mm) & 0.46" (12 mm)
Case: 1/8 DIN, NEMA 4X/IP65
Power: 85-265 VAC or 12/24 VDC option
Operating Temperature: -40 to 65°C

Features

- Master, slave, or snooper mode
- Scan up to 16 PVs
- 4-20 mA analog output option (up to three)
- On-board digital input
- Programmable function keys
- Isolated 24 VDC @ 200 mA transmitter power supply
- On-board RS-485 Modbus® RTU communications

Free Software Available

ScanView: Configure, monitor, and datalog from a PC.
Requires serial communication adapter.



PROVU®
SERIES



Options

- 4-20 mA output with isolated 24 VDC @ 40 mA power supply
- 2 or 4 form C internal relays
- External 4-relay, digital I/O, & dual 4-20 mA out modules
- RS-232, RS-485 serial communications
- SunBright display models

PD6089

ProVu® Feet & Inches Super Snooper Modbus Scanner

FEET & INCHES
MODBUS SCANNER



PROVU®
SERIES



Quick Overview

Input: Modbus® RTU;
Display: Dual-line 6-digit, 0.60" (15 mm) feet & inches upper display, & 0.46" (12 mm) lower display
Case: 1/8 DIN, NEMA 4X/IP65
Power: 85-265 VAC or 12/24 VDC option
Operating Temperature: -40 to 65°C

Features

- Master, slave, or snooper mode
- Scan multiple PVs
- 4-20 mA analog output option (up to three)
- On-board digital input
- Programmable function keys
- Isolated 24 VDC @ 200 mA transmitter power supply
- On-board RS-485 Modbus® RTU communications

Free Software Available

ScanView: Configure, monitor, and datalog from a PC.
Requires serial communication adapter.

Options

- 4-20 mA output with isolated 24 VDC @ 40 mA power supply
- 2 or 4 form C internal relays
- External 4-relay, digital I/O, & dual 4-20 mA out modules
- RS-232, RS-485 serial communications
- SunBright display models

PD6100

PROVU® Strain Gauge Meter

STRAIN GAUGE

Quick Overview

Input: 0-10, 0-20, ± 10 , ± 20 , ± 100 , ± 200 mV; Modbus PV (slave)

Display: Dual-line 6-digit, 0.60" (15 mm) & 0.46" (12 mm)

Case: 1/8 DIN, NEMA 4X/IP65

Power: 85-265 VAC or 12/24 VDC option

Operating Temperature: -40 to 65°C

Features

- Selectable 5, 10, or 24 VDC excitation power supply
- Capture or programmable tare feature
- Ratiometric operation
- Dual-scale feature - single input
- Rounding function 1, 2, 5, 10, 20, 50, or 100
- Auto-zero feature eliminates zero drift
- Isolated 24 VDC @ 200 mA transmitter power supply
- On-board digital input
- Modbus® RTU communication protocol

Free Software Available

MeterView Pro: Configure, monitor, and datalog from a PC. *Requires serial communication adapter.*



PROVU®
SERIES

UL LISTED CE

Options

- 4-20 mA output with isolated 24 VDC @ 40 mA power supply
- 2 or 4 form C internal relays
- External 4-relay and digital I/O expansion modules
- RS-232, RS-485 serial communications
- SunBright display models

PD6200

PROVU® Analog Input Flow Rate/Totalizer

FLOW RATE/TOTAL



PROVU®
SERIES

UL LISTED CE

Quick Overview

Input: 0-20 mA, 4-20 mA; ± 10 VDC (0-5, 1-5, 0-10 V); Modbus PV (slave)

Display: Dual-line 6-digit, 0.60" (15 mm) & 0.46" (12 mm)

Case: 1/8 DIN, NEMA 4X/IP65

Power: 85-265 VAC or 12/24 VDC option

Operating Temperature: -40 to 65°C

Features

- Displays rate and total simultaneously
- Count up or down, total & grand total
- Open channel flow with programmable exponent
- Square root extraction
- 32-point linearization with free software
- Total, grand total, or non-resettable grand total
- Isolated 24 VDC @ 200 mA transmitter power supply
- On-board digital input
- Modbus® RTU communication protocol

Free Software Available

MeterView Pro: Configure, monitor, and datalog from a PC. *Requires serial communication adapter.*

Options

- 4-20 mA output with isolated 24 VDC @ 40 mA power supply
- 2 or 4 form C internal relays
- External 4-relay and digital I/O expansion modules
- RS-232, RS-485 serial communications
- SunBright display models

PD6210

PROVu® Analog Input Batch Controller

BATCH CONTROL

Quick Overview

Input: 0-20 mA, 4-20 mA; ± 10 VDC (0-5, 1-5, 0-10 V); Modbus PV (slave)
Display: Dual-line 6-digit, 0.60" (15 mm) & 0.46" (12 mm)
Case: 1/8 DIN, NEMA 4X/IP65
Power: 85-265 VAC or 12/24 VDC option
Operating Temperature: -40 to 65°C

Features

- Start, batch, pause, & stop with front panel buttons
- Display batch total + rate, grand total, batch count or preset
- Single or multi-stage batching with up to 8 relays
- Automatic overflow correction
- Manual control or automatic batching
- Count up or down, total & grand total
- On-board digital input
- Modbus® RTU communication protocol



PROVu®
SERIES



Free Software Available

MeterView Pro: Configure, monitor, and datalog from a PC. Requires serial communication adapter.

Options

- 4-20 mA output with isolated 24 VDC @ 40 mA power supply
- 2 or 4 form C internal relays
- External 4-relay and digital I/O expansion modules
- RS-232, RS-485 serial communications
- SunBright display models

PD6262

PROVu® Analog Dual-Input Rate/Totalizer

DUAL-INPUT
RATE / TOTALIZER

PROVu®
SERIES



Quick Overview

Input: Dual 0-20 mA, 4-20 mA; ± 10 VDC (0-5, 1-5, 0-10 V); Modbus PV (slave)
Display: Dual-line 6-digit, 0.60" (15 mm) & 0.46" (12 mm)
Case: 1/8 DIN, NEMA 4X/IP65
Power: 85-265 VAC or 12/24 VDC option
Operating Temperature: -40 to 65°C

Features

- Display rate, total, or grand total for either channel, or math
- Math functions based on rate, total, or grand total
- Addition, difference, absolute difference, average, multiplication, division, min of A or B, max of A or B, draw, weighted average, ratio, and concentration math functions
- Count up or down, total & grand total
- 5, 10 or 24 VDC isolated flowmeter power supply
- On-board digital input
- Modbus® RTU communication protocol

Free Software Available

MeterView Pro: Configure, monitor, and datalog from a PC. Requires serial communication adapter.

Options

- 4-20 mA output with isolated 24 VDC @ 40 mA power supply
- 2 or 4 form C internal relays
- External 4-relay, digital I/O, & dual 4-20 mA out modules
- RS-232, RS-485 serial communications
- SunBright display models

PD6300

PROVU® Pulse Input Flow Rate/Totalizer

FLOW RATE/TOTAL

Quick Overview

Input: Pulse, open collector, NPN, PNP, TTL, switch contact, sine wave (coil), square wave; Modbus PV (slave)
Display: Dual-line 6-digit, 0.60" (15 mm) & 0.46" (12 mm)
Case: 1/8 DIN, NEMA 4X/IP65
Power: 85-265 VAC or 12/24 VDC option
Operating Temperature: -40 to 65°C

Features

- Displays rate and total simultaneously
- Count up or down, total & grand total
- 5, 10, or 24 VDC flowmeter power supply
- Gate function for rate display of slow pulse rates
- K-Factor, internal scaling, or external calibration
- Can convert pulse input to an isolated 4-20 mA output
- Isolated 24 VDC @ 200 mA transmitter power supply
- On-board digital input

Free Software Available

MeterView Pro: Configure, monitor, and datalog from a PC. *Requires serial communication adapter.*



PROVU®
SERIES



Options

- 4-20 mA output with isolated 24 VDC @ 40 mA power supply
- 2 or 4 form C internal relays
- External 4-relay and digital I/O expansion modules
- RS-232, RS-485 serial communications
- SunBright display models

PD6310

PROVU® Pulse Input Batch Controller

BATCH CONTROL



PROVU®
SERIES



Quick Overview

Input: Pulse, open collector, NPN, PNP, TTL, switch contact, sine wave (coil), square wave, Modbus PV (slave)
Display: Dual-line 6-digit, 0.60" (15 mm) & 0.46" (12 mm)
Case: 1/8 DIN, NEMA 4X/IP65
Power: 85-265 VAC or 12/24 VDC option
Operating Temperature: -40 to 65°C

Features

- Start, batch, pause, & stop with front panel buttons
- Display batch total + rate, grand total, batch count or preset
- Single or multi-stage batching with up to 8 relays
- Automatic overflow correction
- Manual control or automatic batching
- Count up or down, total & grand total
- On-board digital input
- Modbus® RTU communication protocol

Free Software Available

MeterView Pro: Configure, monitor, and datalog from a PC. *Requires serial communication adapter.*

Options

- 4-20 mA output with isolated 24 VDC @ 40 mA power supply
- 2 or 4 form C internal relays
- External 4-relay and digital I/O expansion modules
- RS-232, RS-485 serial communications
- SunBright display models

PD6363

PROVU® Pulse Dual-Input Rate/Totalizer

DUAL-INPUT
RATE / TOTALIZER

Quick Overview

Input: Dual Pulse, open collector, NPN, PNP, TTL, switch contact, sine wave (coil), square wave; Modbus PV (slave)
Display: Dual-line 6-digit, 0.60" (15 mm) & 0.46" (12 mm)
Case: 1/8 DIN, NEMA 4X/IP65
Power: 85-265 VAC or 12/24 VDC option
Operating Temperature: -40 to 65°C

Features

- Quadrature inputs
- Display rate, total, or grand total for either channel, or math
- Math functions based on rate, total, or grand total
- Addition, difference, absolute difference, average, multiplication, division, min of A or B, max of A or B, draw, weighted average, ratio, and concentration math functions
- Count up or down, total & grand total
- Count up or down based on digital input
- Count up or down based on second input
- 5, 10 or 24 VDC isolated flowmeter power supply
- Convert pulse input or math result to a 4-20 mA output

Free Software Available

MeterView Pro: Configure, monitor, and datalog from a PC. *Requires serial communication adapter.*



PROVU
SERIES



Options

- 4-20 mA output with isolated 24 VDC @ 40 mA power supply
- 2 or 4 form C internal relays
- External 4-relay, digital I/O, & dual 4-20 mA out modules
- RS-232, RS-485 serial communications
- SunBright display models

PD7000

PROVU® Temperature Meter

TEMPERATURE



PROVU
SERIES



Quick Overview

Input: Thermocouple J, K, T, E, R, S, B, N, C; RTD 100 Ω Pt, 10 Ω Cu, 120 Ω Ni, 1,000 Ω Pt; Modbus PV (slave)
Display: Dual-line 6-digit: 0.60" (15 mm) & 0.46" (12 mm)
Case: 1/8 DIN, NEMA 4X/IP65
Power: 85-265 VAC or 12/24 VDC option
Operating Temperature: -20 to 65°C

Features

- 1° or 0.1° resolution
- Averages up to 10 RTD sensors
- Automatic cold junction compensation
- Interlock relays (force on)
- On-board digital input
- Programmable function keys
- Modbus® RTU communication protocol

Free Software Available

MeterView Pro: Configure, monitor, and datalog from a PC. *Requires serial communication adapter.*

Options

- 4-20 mA output with isolated 24 VDC @ 40 mA power supply
- 2 or 4 form C internal relays
- External 4-relay and digital I/O expansion modules
- RS-232, RS-485 serial communications
- SunBright display models

PD765 X2

Trident X2 Process & Temperature Meter

PROCESS & TEMP

Quick Overview

Input: Process: 0-20 mA, 4-20 mA;
±10 VDC (0-5, 1-5, 0-10 V)
Temperature: Thermocouple J, K, T, E; RTD 100 Ω Pt
Display: 4-digit, 1.20" (30.5 mm)
Case: 1/8 DIN, NEMA 4X/IP65
Power: 85-265 VAC or 12-36 VDC option
Operating Temperature: 0 to 65°C

Features

- 1° or 0.1° resolution with RTD
- Sunlight readable display
- Maximum/minimum display
- Linear or square root with low-flow cutoff
- Transmitter power option
- Modbus® RTU or proprietary ASCII protocol
- Shallow depth case 3.6" behind panel

Free Software Available

MeterView: Program, monitor, and datalog up to 100 meters from PC. *Requires serial communication adapter.*



Options

- 2 relays and 4-20 mA analog output options
- 24 VDC transmitter power supply
- Dual 24 VDC transmitter power supplies
- Serial communications

PD765

Trident Process & Temperature Meter

PROCESS & TEMP



Quick Overview

Input: Process: 0-20 mA, 4-20 mA;
±10 VDC (0-5, 1-5, 0-10 V)
Temperature: Thermocouple J, K, T, E; RTD 100 Ω Pt
Display: 4-digit, 0.56" (14.2 mm)
Case: 1/8 DIN, NEMA 4X/IP65
Power: 85-265 VAC or 12-36 VDC option
Operating Temperature: 0 to 65°C

Features

- 1° or 0.1° resolution with RTD
- Sunlight readable display
- Maximum/minimum display
- Linear or square root with low-flow cutoff
- Transmitter power option
- Modbus® RTU or proprietary ASCII protocol
- Shallow depth case 3.6" behind panel

Free Software Available

MeterView: Program, monitor, and datalog up to 100 meters from PC. *Requires serial communication adapter.*

Options

- 2 relays and 4-20 mA analog output options
- 24 VDC transmitter power supply
- Dual 24 VDC transmitter power supplies
- Serial communications

PD603

Sabre P Process Meter

Sabre Series

PROCESS

Quick Overview

Input: 0-20 mA, 4-20 mA;
±10 VDC (0-5, 1-5, 0-10 V)
Display: 4-digit, 0.56" (14.2 mm)
Case: 1/8 DIN, NEMA 4X/IP65
Power: 85-265 VAC or 12-36 VDC
Operating Temperature: 0 to 65°C

Options

- 24 VDC transmitter power supply

Features

- Maximum/minimum display
- Scale without a signal source
- Calibrate with a signal source
- Easy front panel programming
- Shallow depth enclosure 3.6" behind panel



PD644

Javelin D High-Voltage DC Meter

HIGH VOLTAGE

Quick Overview

Input: 0-300 VDC
Display: 4-digit, 0.56" (14.2 mm)
Case: 1/8 DIN, NEMA 4X/IP65
Power: 85-265 VAC or 12-36 VDC
Operating Temperature: 0 to 65°C

Options

- 2 form C relays
- 24 VDC transmitter supply

Features

- Maximum/minimum display
- RS-485 serial communications
- 4-20 mA output
- Modbus® RTU
- Shallow depth enclosure 3.6" behind panel



PD743

Sabre T Temperature Meter

Sabre Series

TEMPERATURE

Quick Overview

Input: Thermocouple J, K, T, E;
RTD 100 Ω platinum
Display: 4-digit, 0.56" (14.2 mm)
Case: 1/8 DIN, NEMA 4X/IP65
Power: 85-265 VAC or 12-36 VDC
Operating Temperature: 0 to 65°C

Features

- 1° or 0.1° resolution with RTD
- Maximum/minimum display
- Pre-calibrated for all input types
- Easy front panel programming
- Shallow depth enclosure 3.2" behind panel



PD865

Snooper Modbus® Serial Input Meter

Snooper

MODBUS INPUT

Quick Overview

Input: RS-485 Modbus RTU
Display: 6-digit, 0.56" (14.2 mm)
Case: 1/8 DIN, NEMA 4X/IP65
Power: 85-265 VAC or 12-36 VDC
Operating Temperature: -40 to 65°C

Options

- 2 form C relays
- Isolated 4-20 mA transmitter output

Features

- Master, slave, or snooper mode
- 2 form A relays
- Linear, square root, or programmable exponent
- RS-485 serial communications
- Proxy polling for up to 8 process variables
- Shallow depth enclosure 3.4" behind panel



PD138

Minimux® II Temperature & Process Scanner

Quick Overview

Input: TC, RTD, Process, AC, DC
Display: Eight LED indicators
Case: 1/8 DIN, NEMA 4X/IP65
Power: 115 VAC, 230 VAC, 12-24 VDC
Operating Temperature: -40 to 65°C

Options

- Current loop resistor

Features

- 8 inputs per unit
- Unlimited number of units per system
- Adjustable dwell time for each channel
- Independent alarm input for each channel
- First-out alarm indication
- Built-in 85 dB horn

MINIMUX® II



PD154

Vigilante® II 4-Point Alarm Annunciator

Quick Overview

Input: Switch, transistor, logic level
Display: Four red LED indicators
Case: 1/8 DIN, NEMA 4X/IP65
Power: 85-265 VAC or 12-36 VDC
Operating Temperature: -40 to 65°C

Accessories

- PDA1500 High VAC/VDC to Logic Level Converter

Features

- 8 field selectable sequences
- 4-point monitoring
- All common ISA sequences including first-out
- Built-in 85 dB horn
- 2 SPDT relays for alarm activated devices
- Silence, acknowledge, and reset functions
- Multiple-unit first-out indication

Vigilante® II



PD158

Vigilante® II 8-Point Alarm Annunciator

Quick Overview

Input: Switch, transistor, logic level
Display: Eight red LED indicators
Case: 1/8 DIN, NEMA 4X/IP65
Power: 85-265 VAC or 12-36 VDC
Operating Temperature: -40 to 65°C

Accessories

- PDA1500 High VAC/VDC to Logic Level Converter

Features

- 8 field selectable sequences
- 8-point monitoring
- All common ISA sequences including first-out
- Built-in 85 dB horn
- 2 SPDT relays for alarm activated devices
- Silence, acknowledge, and reset functions
- Multiple-unit first-out indication

Vigilante® II



PDS178

Temperature Scanning System

Quick Overview

Input: J, K, E, T thermocouples, 100 Ω platinum RTD
Display: 4-digit + 8 LED indicators
Case: NEMA 4X plastic
Power: 115 VAC
Operating Temperature: 0 to 65°C

Options

- PDS178: 0.56" (14.2 mm) display
- PDS178X2: 1.2" (30.5 mm) display

Features

- 8-channel temperature scanner
- Temperature indicator with 2 relays
- NEMA 4X plastic enclosure
- 8 inputs per unit
- Built-in 85 dB horn
- First-out indication
- Sunlight readable indication



MeterView[®] Pro

Software For PROVu[®] Series

Quick Overview

System Requirements: Windows[®] 2000, XP, Vista, 7 (Windows[®] 32-bit and 64-bit operating systems)

Communications: One meter at a time: USB, RS-232, or RS-485

Meter Address: 1 - 247

Reports: Data logging: Save as CSV file format

Configuration: Save as PDC file format or print configuration

Baud Rate: 300 - 19,200 bps

Protocol: Modbus RTU (requires PROVu[®] firmware version 2.0 or higher)

Features

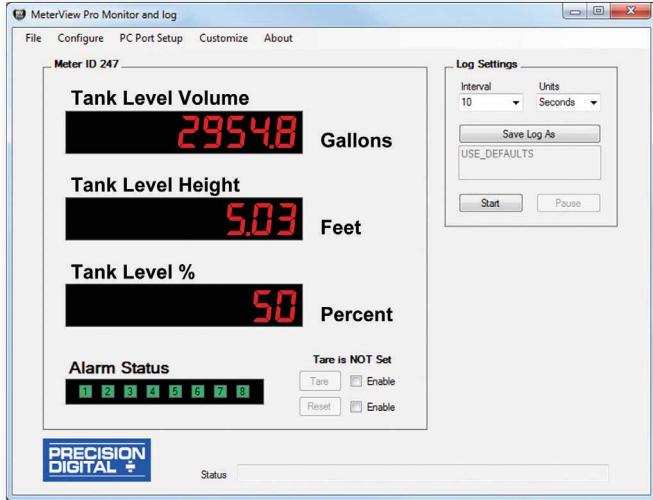
Communicate from a PC to

- Configure the meter
- Monitor present trends
- Log to as large of a file as needed

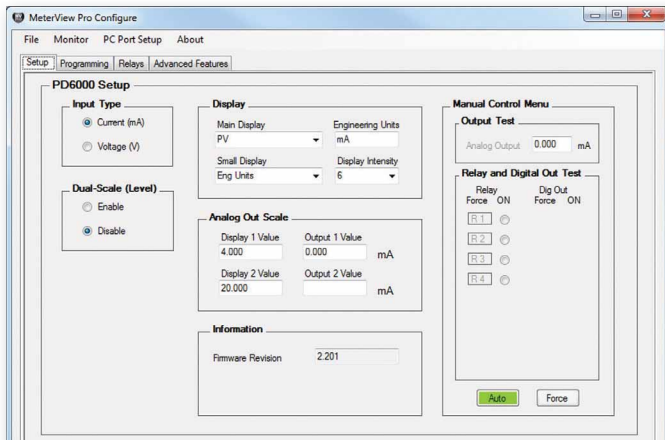
Required Adapter

PDA8008 PROVu[®] USB serial adapter (recommended) or **PDA1232** PROVu[®] RS-232 serial adapter

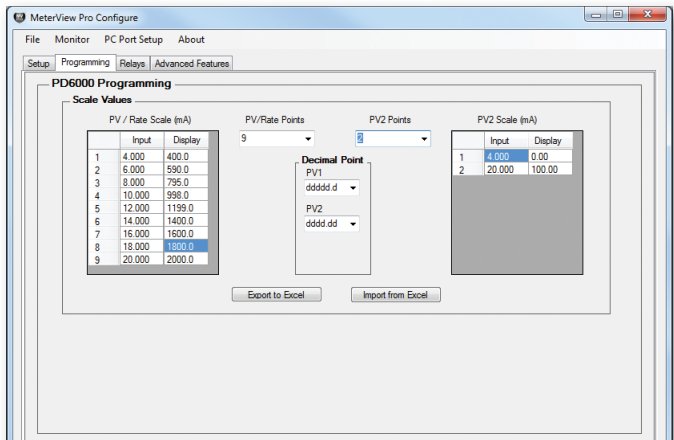
Configuring & Monitoring Software for PROVu[®] Series



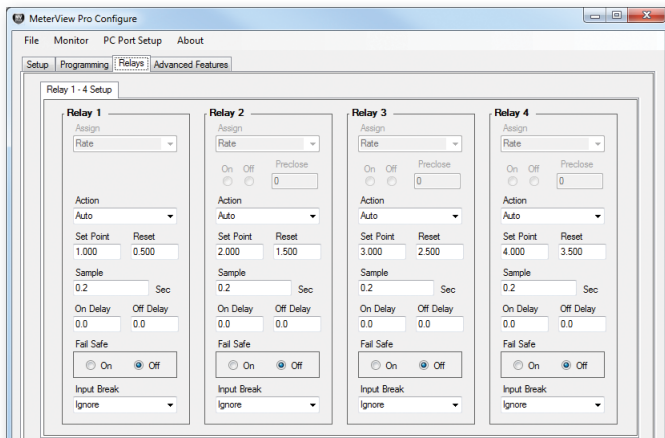
Monitor & Datalog



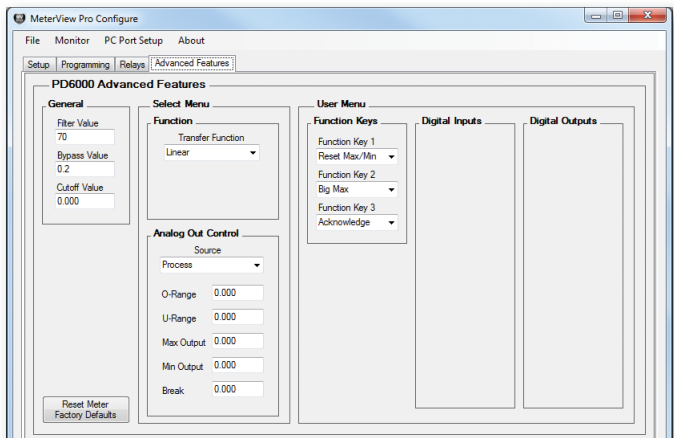
Setup



Linearization Utility



Relays



Advanced Features

ScanView

Software For ProVu® Super Snooper Modbus Scanners

Quick Overview

System Requirements: Windows® 2000, XP, Vista, 7, 8

Communications: RS-232, or RS-485 Adapter

Meter Address: 1 - 247

PV Slave ID: 1-247, 256-259 for on-board current & voltage inputs

Reports:

Data logging: Save as CSV file format

Configuration: Save as MVP file format or print configuration

Baud Rate: 300 - 19,200 bps

Configuration: One meter at a time

Protocol: Modbus RTU

Features

- Use in Modbus master, slave, or snooper mode
- Scan up to 16 Modbus process variables
- Easily configure Super Snooper Modbus Scanners
- Manage scanner settings
- Monitor critical process information
- Program and display the four math channels
- Manage relays and analog outputs
- Independent scaling, tag, and unit for each PV
- Modbus RTU serial communications via RS-485
- Data log all PVs to a PC

Required Adapter

PDA8008 ProVu® USB serial adapter (PD6088 & PD6089)

PDA8485 USB to RS-422/485 converter (PD6080 & PD6081)

Configuring & Monitoring Software for ProVu® Modbus Scanners



MeterView®

Software For Trident Series

Quick Overview

System Requirements: Windows® XP (SP3), Vista, 7, 8
(Note: Windows® 32-bit and 64-bit operating systems only)

Communications: USB, RS-232, or RS-485 Adapter

Meter Address: 00 - 99

Reports: Data logging: Save as HTML file format

Configuration: Save as plain text, export to HTML, or print configuration

Baud Rate: 300 - 19,200 bps

Configuration: One meter at a time

Features

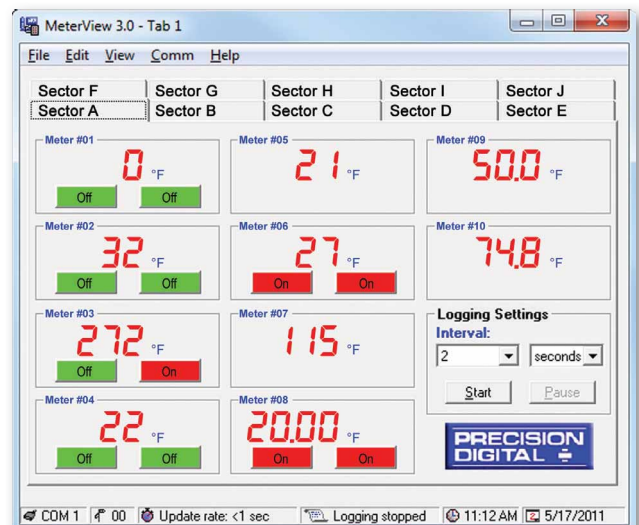
- Monitor up to 100 meters
- Program or read meter settings
- Save meter profiles for cloning
- Use profiles for reporting

Required Adapter

PDA8006 Trident USB serial adapter (recommended)

or **PDA7232** Trident RS-232 serial adapter

Configuring & Monitoring Software for Trident Series



MeterView[®] EX

Software For PD6830 & PD6730

Quick Overview

System Requirements: Windows[®] XP, Vista, 7, 8
Communications: RS-485 adapter or direct USB adapter from PD6830.

Meter Address: 1 - 247

Baud Rate: 1,200 - 115,200 bps, selection must match the baud rate selected in the meter

Configuration: Configure meter settings one meter at a time.

Data Logging Report: Save as CSV file format

Configuration Report: Save as MVE file or print configuration

Protocol: Modbus RTU

Features

Communicate from a PC to

- Configure the meter
- Monitor present trends
- Log to as large of a file as needed

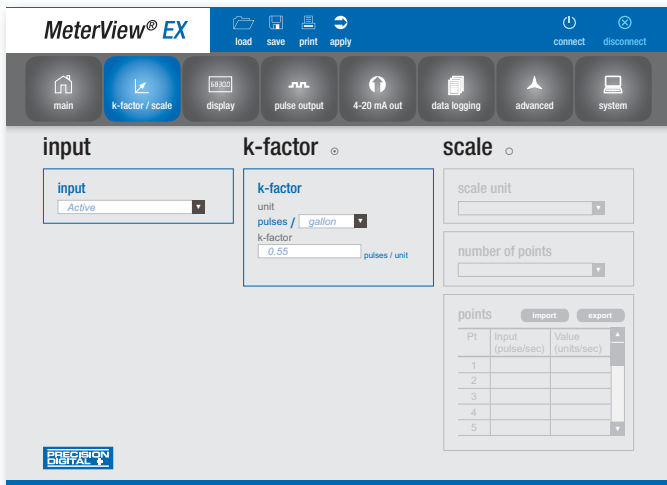
Required Adapter

PDA8068 USB serial adapter

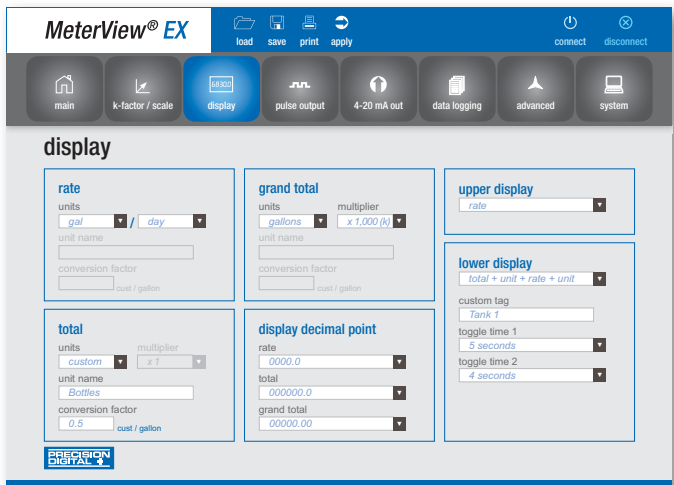
Configuring & Monitoring Software for PD6830 & PD6730



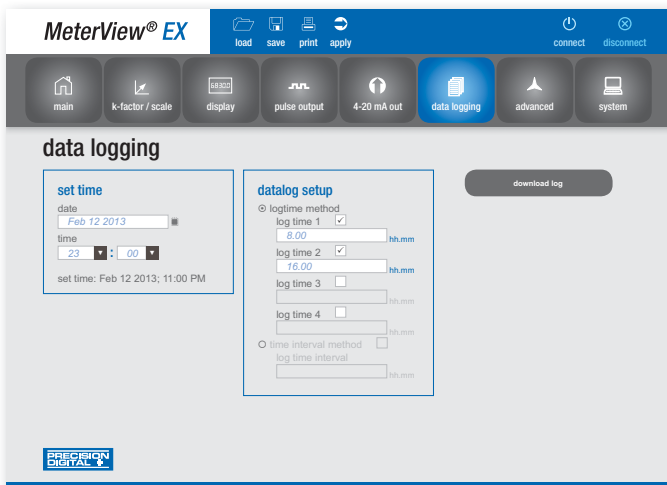
Monitoring



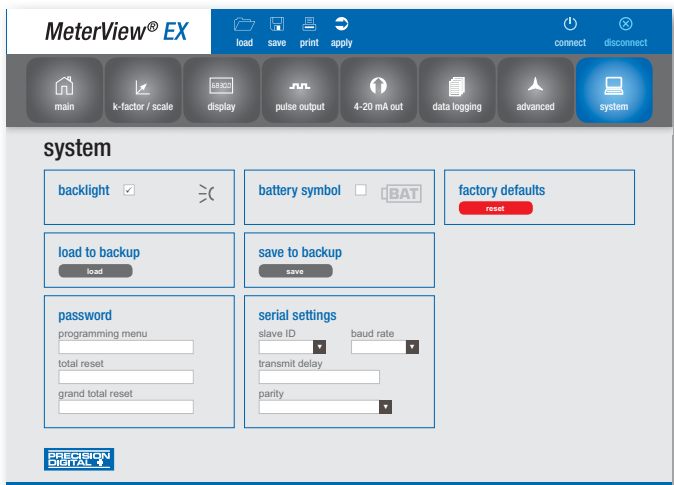
Input Setup



Display Setup



Data Logging



System Setup

PROVU[®] Accessories

Expansion Modules

PDA1004: 4-relay module
PDA1011*: Dual 4-20 mA output module
PDA1044: 4 digital I/O module

Additional Accessories

PDA1002: DIN-rail mounting kit
PDA1200: Meter copy cable

Serial Adapters

PDA1232: RS-232 serial adapter
PDA1485: RS-485 serial adapter
PDA8008: USB serial adapter

* PDA1011 for use with PD6060, PD6080, PD6081, PD6088, PD6089, PD6262, and PD6363 only.



Trident Accessories

Serial Adapters

PDA7232: RS-232 serial adapter
PDA7422: RS-485 serial adapter
PDA8006: USB serial adapter

Additional Accessories

PDA7420: Meter copy cable



Serial Converters

RS-232 to RS-422/485

PDA7485-I: converter, isolated
PDA7485-N: converter, non-isolated

USB to RS-232

PDA8232-N: converter, non-isolated

USB to RS-422/485

PDA8485-I: converter, isolated
PDA8485-N: converter, non-isolated



MeterView EX Adapter

Serial Adapter

PDA8068: USB serial adapter for PD6730 & PD6830



Need Help Selecting an Enclosure?

www.predig.com/esu



PDA2322



PDA2407



PDA2501



PDA2601



PDA2703



PDA2801



PDA2901

PDA2300 Plastic Economical

	Model	# of Meters	Type				
			A	B	C	D	E
Thermoplastic Polyester NEMA 4X Mount Externally	PDA2301*	1			•		
	PDA2302*	2	•	•	•	•	
	PDA2303*	3	•	•	•	•	
	PDA2304*	4	•	•	•	•	
	PDA2305*	5	•	•	•	•	
	PDA2306*	6	•	•	•	•	
	PDA2307	7	•	•	•	•	
	PDA2308	8	•	•	•	•	
	PDA2309	9	•	•	•	•	
	PDA2310	10	•	•	•	•	
	PDA2312	2	•	•	•	•	■
	PDA2322	2	•	•	•	■	■

• Available ■ 1 Required

PDA2500 Plastic Rugged

	Model	# of Meters	Type				
			A	B	C	D	E
Thermoplastic Polyester NEMA 4X Mount Externally	PDA2501*	1		•	•		
	PDA2502*	2		•	•		
	PDA2503*	3		•	•		
	PDA2504*	4	•	•	•	•	
	PDA2505*	5	•	•	•	•	
	PDA2506*	6	•	•	•	•	
	PDA2507	7	•	•	•	•	
	PDA2508	8	•	•	•	•	
	PDA2509	9	•	•	•	•	
	PDA2510	10	•	•	•	•	
	PDA2512	2	•	•	•	•	■
	PDA2522	2	•	•	•	■	■

• Available ■ 1 Required

PDA2700 Steel

	Model	# of Meters	Type				
			A	B	C	D	E
Steel NEMA 4 Mount Externally	PDA2701*	1			•		
	PDA2702*	2			•		
	PDA2703*	3			•		
	PDA2704*	4	•	•	•	•	
	PDA2704-1	1	•	•	•	•	
	PDA2704-2	2	•	•	•	•	
	PDA2705*	5	•	•	•	•	
	PDA2706*	6	•	•	•	•	
	PDA2713	4	•	•	•	■	•
	PDA2722	2			•	■	

• Available ■ 1 Required

PDA2400 Plastic

	Model	# of Meters	Type				
			A	B	C	D	E
Plastic NEMA 4X Mount Internally	PDA2407	1	•	•	•	•	•
	PDA2408	2	•				
	PDA2409	3	•				
	PDA2410	4	•				
	PDA2411	2	•	•	•	•	•
	PDA2412	3	•				
	PDA2414	2	•	•	•	■	•
	PDA2415	4	•				

• Available ■ 1 Required

PDA2600 Stainless Steel

	Model	# of Meters	Type				
			A	B	C	D	E
Stainless Steel NEMA 4X Mount Externally	PDA2601*	1			•		
	PDA2602*	2			•		
	PDA2603*	3			•		
	PDA2604*	4	•	•	•	•	
	PDA2605*	5	•	•	•	•	
	PDA2606*	6	•	•	•	•	
	PDA2622	2			•	■	

• Available ■ 1 Required

PDA2800 Plastic Low-Cost

	Model	# of Meters	Type				
			A	B	C	D	E
Plastic NEMA 4X Low-Cost	PDA2801	1			•	•	
	PDA2811	1	•	•	•	•	•
	PDA2812	2	•	•	•	•	•
	PDA2821	2	•	•	•	■	•

• Available ■ 1 Required

PDA2900 Plastic

	Model	# of Meters	Meter Types	Size
PDA2904	1	Consolidator	Large	

Meter Types

Type	Meters
A	PD690
B	PD542, PD543, and PD562
C	PD603, PD644, PD683, PD684, PD688, PD689, PD743, PD765, and PD865
D	PD138, PD154, and PD158
E	PD6000, PD6060, PD6080, PD6081, PD6088, PD6089, PD6100, PD6200, PD6210, PD6262, PD6300, PD6310, PD6363, and PD7000

* Vertical panel cutouts available for Type D meters. To order add -V at the end of part number (e.g. PDA2501-V).

PD662

Survivor NEMA 4X Process Meter

PROCESS

Quick Overview

Input: 4-20 mA
Display: 3½+ digits, 0.6" (15.24 mm)
Case: NEMA 4X high impact plastic
Power: Loop-powered
Operating Temperature: -40 to 75°C
 (-55 to 75°C with heater option)

Features

- 1.7 V drop (3.7 V with backlight)
- Maximum/minimum display
- Easy four-button programming
- ½" NPT conduit hole
- HART protocol transparent
- Multipoint linearization and square root function

Options

- Heater
- Loop-powered backlight



Survivor



PD683

Loop Leader® Process Meter

PROCESS



Quick Overview

Input: 4-20 mA
Display: 5-digit, 0.6" (15.2 mm)
Case: 1/8 DIN, NEMA 4X/IP65
Power: Loop-powered
Operating Temperature: -30 to 65°C

Features

- 2.0 V drop (5.7 V drop with backlight)
- Loop-powered backlight standard
- Custom engineering units
- Maximum/minimum display
- Linear, square root or programmable exponent
- Bargraph display and trend arrow
- Shallow depth enclosure 3.2" behind panel

Loop Leader®
Series



PD684

Loop Leader® Rate/Totalizer

FLOW RATE/TOTAL

Quick Overview

- Input:** 4-20 mA
- Display:** 5-digit, 0.6" (15.2 mm)
- Case:** 1/8 DIN, NEMA 4X/IP65
- Power:** Loop-powered
- Operating Temperature:** -20 to 65°C

Features

- 2.0 V drop (5.7 V drop with backlight)
- Loop-powered backlight standard
- Custom engineering units
- Maximum/minimum display
- Linear, square root or programmable exponent
- Bargraph display and trend arrow
- Programmable alternating rate/total display
- Open collector alarm or pulse output
- Shallow depth enclosure 3.2" behind panel



PD685

NEMA 4X Process Meter

PROCESS

Quick Overview

- Input:** 4-20 mA
- Display:** 3½ digits, 1.0" (25.4 mm)
- Case:** NEMA 4X high impact plastic
- Power:** Loop-powered
- Operating Temperature:** -40 to 85°C

Options

- ½" conduit hole (rear, top, or none)

Features

- 1.0 V drop
- ½" NPT conduit hole (bottom)
- NEMA 4X IP67 high impact plastic enclosure



PD686

NEMA 4X Process Meter

PROCESS



Quick Overview

- Input:** 4-20 mA
- Display:** 3½ digits, 1.0" (25.4 mm)
- Case:** NEMA 4X high impact plastic
- Power:** Loop-powered
- Operating Temperature:** -40 to 85°C

Options

- ½" conduit hole (rear, top, or none)

Features

- 1.0 V drop
- ½" NPT conduit hole (bottom)
- NEMA 4X IP67 high impact plastic enclosure

PD688

Loop Leader® Process Meter

PROCESS

Quick Overview

Input: 4-20 mA
Display: 5-digit, 0.6" (15.2 mm)
Case: 1/8 DIN, NEMA 4X/IP65
Power: Loop-powered
Operating Temperature: -30 to 65°C

Features

- 2.0 V drop (5.7 V drop with backlight)
- Loop-powered backlight standard
- Custom engineering units
- Maximum/minimum display
- Linear, square root or programmable exponent
- Bargraph display and trend arrow
- Shallow depth enclosure 3.2" behind panel



PD689

Loop Leader® Rate/Totalizer

FLOW RATE/TOTAL



Quick Overview

Input: 4-20 mA
Display: 5-digit, 0.6" (15.2 mm)
Case: 1/8 DIN, NEMA 4X/IP65
Power: Loop-powered
Operating Temperature: -20 to 65°C

Features

- 2.0 V drop (5.7 V drop with backlight)
- Loop-powered backlight standard
- Custom engineering units
- Maximum/minimum display
- Linear, square root or programmable exponent
- Bargraph display and trend arrow
- Programmable alternating rate/total display
- Open collector alarm or pulse output
- Shallow depth enclosure 3.2" behind panel



New

vantageview

Safe Area NEMA 4X Field-Mount
Loop-Powered Indicators,
Flow Rate/Totalizers, and
Modbus Scanners.

4-20 mA
input

pulse
input

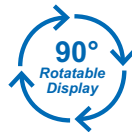
modbus
input



PD6700

Vantageview Process Meter

PROCESS



vantageview

Quick Overview

Input: 4-20 mA

Display: 5-digit upper display 0.7" (17.8 mm);
7 alphanumeric character lower display 0.4" (10.2 mm)

Case: Plastic NEMA 4X field mount

Power: Loop-powered

Operating Temperature: -40 to 75°C

Features

- SafeTouch® through-window button programming
- Alphanumeric tag names
- 3.0 V drop (6.0 V drop with backlight)
- Flanges for wall or pipe mounting
- Backlight standard
- Loop-powered
- Password protection
- 32-point, square root, or exponential linearization

PD6701

Vantageview Feet & Inches Level Meter

FEET & INCHES
ANALOG INPUT

Quick Overview

Input: 4-20 mA

Display: 0.6" (15.24 mm) feet & inches upper display;
7 alphanumeric character lower display 0.4" (10.2 mm)

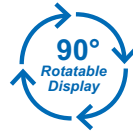
Case: Plastic NEMA 4X field mount

Power: Loop-powered

Operating Temperature: -40 to 75°C

Features

- SafeTouch® through-window button programming
- Alphanumeric tag names
- 3.0 V drop (6.0 V drop with backlight)
- Flanges for wall or pipe mounting
- Backlight standard
- Loop-powered
- Password protection
- 32-point linearization
- Level and volume
- Level and percent
- Open collector Hi or Lo alarm
- Tank level bargraph



vantageview

PD6720

Vantageview Analog Input Flow Rate/Totalizer

FLOW RATE/TOTAL

Quick Overview

Input: 4-20 mA

Display: 5-digit rate 0.7" (17.8 mm); 7 alphanumeric character total 0.4" (10.2 mm)

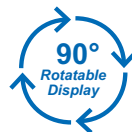
Case: Plastic NEMA 4X field mount

Power: Loop-powered

Operating Temperature: -40 to 75°C

Features

- SafeTouch® through-window button programming
- 7-digit totalizer
- 3.0 V drop (6.0 V drop with backlight)
- Flanges for wall or pipe mounting
- Backlight standard
- Loop-powered
- Password protection
- 32-point, square root, or exponential linearization
- Open collector pulse or alarm output

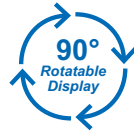


vantageview

PD6730

Vantageview Pulse Input Flow Rate/Totalizer

FLOW RATE/TOTAL



 vantageview

Quick Overview

Input: Pulse, open collector, NPN, PNP, TTL, switch contact, sine wave (coil), square wave, opto-isolated

Display: 5-digit rate 0.7" (17.8 mm); 7 alphanumeric character total 0.4" (10.2 mm)

Case: Plastic NEMA 4X field mount

Power: 9-30 VDC, output-loop, or battery

Operating Temperature: -40 to 75°C (-20 to 75°C battery)

Features

- SafeTouch® through-window button programming
- Up to 13-digit total with overflow display
- Mounts directly to flowmeter
- Automatic rate, total, & grand total unit conversions
- On-board data logging (1024 points)
- Two isolated open collector pulse outputs, up to 5 kHz
- Backlight standard on all models

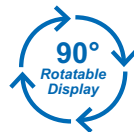
Options

- Isolated 4-20 mA output for rate, total, or grand total
- Isolated or non-isolated RS-485 with Modbus® communications

PD6730X

Vantageview Super Snooper Modbus Scanner

MODBUS SCANNER



 vantageview

Quick Overview

Input: Modbus® RTU, pulse

Display: 5-digit 0.7" (17.8 mm) upper display; 7 alphanumeric character 0.4" (10.2 mm) lower display

Case: Plastic NEMA 4X field mount

Power: 9-30 VDC

Operating Temperature: -40 to 75°C

Features

- Master, slave, or snooper mode
- Scan multiple process variables (PV)
- SafeTouch® through-window button programming
- Alphanumeric tag names
- Flanges for wall or pipe mounting
- Backlight standard
- Password protection
- 32-point linearization channel
- Two open collector pulse or alarm outputs

PD6730X

Vantageview F&I Super Snooper Modbus Scanner

FEET & INCHES
MODBUS SCANNER

Quick Overview

Input: Modbus® RTU

Display: 0.6" (15.24 mm) feet & inches upper display;
7 alphanumeric character lower display 0.4" (10.2 mm)

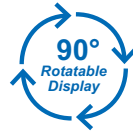
Case: Plastic NEMA 4X field mount

Power: 9-30 VDC

Operating Temperature: -40 to 75°C

Features

- Master, slave, or snooper mode
- Scan multiple tanks
- SafeTouch® through-window button programming
- Alphanumeric tag names
- Flanges for wall or pipe mounting
- Backlight standard
- Password protection
- 32-point linearization
- Two open collector alarm outputs
- Tank level bargraph

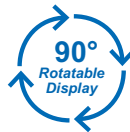


vantageview

PD6770

Vantageview Large Display Meter

PROCESS



vantageview

Quick Overview

Input: 4-20 mA

Display: 3½ digits, 1.0" (25.4 mm)

Case: Plastic NEMA 4X field mount

Power: Loop-powered

Operating Temperature: -40 to 75°C

Options

- Loop-powered backlight

Features

- 1.0 V drop (4.0 V drop with backlight)
- Flanges for wall or pipe mounting
- Easy calibration and installation

PD663

ProtEX-Lite Process Meter

PROCESS

Quick Overview

Input: 4-20 mA

Display: 3½+ digits, 0.6" (15.24 mm)

Case: Smooth die-cast aluminum explosion-proof

Power: Loop-powered

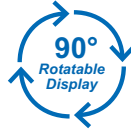
Operating Temperature: -40 to 75°C

Options

- Loop-powered backlight
- Reed switches

Features

- 1.7 V drop (4.7 V drop with backlight)
- Flanges for wall or pipe mounting
- Maximum/minimum display
- Programmable noise filter
- Multipoint linearization and square root function



ProtEX
Lite

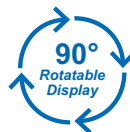


Explosion-proof. Complete product approved.

PD6800

ProtEX-Pro Process Meter

PROCESS



ProtEX
Pro



Explosion-proof. Complete product approved.

Quick Overview

Input: 4-20 mA

Display: 5-digit upper display 0.7" (17.8 mm);
7 alphanumeric character lower display 0.4" (10.2 mm)

Case: Smooth die-cast aluminum explosion-proof

Power: Loop-powered

Operating Temperature: -40 to 75°C

Features

- SafeTouch® through-glass button programming
- Alphanumeric tag names
- 3.0 V drop (6.0 V drop with backlight)
- Flanges for wall or pipe mounting
- Backlight standard
- Loop-powered
- Password protection
- 32-point, square root, or exponential linearization

PD6801

ProtEX-F&I Feet & Inches Level Meter

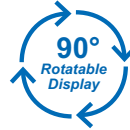
FEET & INCHES
ANALOG INPUT

Quick Overview

Input: 4-20 mA
Display: 0.6" (15.24 mm) feet & inches upper display;
 7 alphanumeric character lower display 0.4" (10.2 mm)
Case: Smooth die-cast aluminum explosion-proof
Power: Loop-powered
Operating Temperature: -40 to 75°C

Features

- SafeTouch® through-glass button programming
- Alphanumeric tag names
- 3.0 V drop (6.0 V drop with backlight)
- Flanges for wall or pipe mounting
- Backlight standard
- Loop-powered
- Password protection
- 32-point linearization
- Level and volume
- Level and percent
- Open collector Hi or Lo alarm
- Tank level bargraph

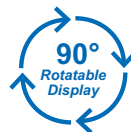


Explosion-proof. Complete product approved.

PD6820

ProtEX-RTA Analog Input Flow Rate/Totalizer

FLOW RATE/TOTAL



Quick Overview

Input: 4-20 mA
Display: 5-digit rate 0.7" (17.8 mm); 7 alphanumeric character total 0.4" (10.2 mm)
Case: Smooth die-cast aluminum explosion-proof
Power: Loop-powered
Operating Temperature: -40 to 75°C

Features

- SafeTouch® through-glass button programming
- 7-digit totalizer
- 3.0 V drop (6.0 V drop with backlight)
- Flanges for wall or pipe mounting
- Backlight standard
- Loop-powered
- Password protection
- 32-point, square root, or exponential linearization
- Open collector pulse or alarm output



Explosion-proof. Complete product approved.

PD6830

ProtEX-RTP Pulse Input Flow Rate/Totalizer

FLOW RATE/TOTAL

Quick Overview

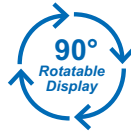
- Input:** Pulse, open collector, NPN, PNP, TTL, switch contact, sine wave (coil), square wave, opto-isolated
Display: 5-digit rate 0.7" (17.8 mm); 7 alphanumeric character total 0.4" (10.2 mm)
Case: Smooth die-cast aluminum explosion-proof
Power: 9-30 VDC, output-loop, or battery
Operating Temperature: -40 to 75°C (-20 to 75°C battery)

Features

- SafeTouch® through-glass button programming
- Up to 13-digit total with overflow display
- Mounts directly to flowmeter
- Automatic rate, total, & grand total unit conversions
- On-board data logging (1024 points)
- Two isolated open collector pulse outputs, up to 5 kHz
- Backlight standard on all models

Options

- Isolated 4-20 mA output for rate, total, or grand total
- Isolated or non-isolated RS-485 with Modbus® communications

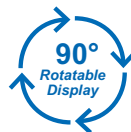


Explosion-proof. Complete product approved.

PD6870

ProtEX-FarVu Large Display Meter

PROCESS



Quick Overview

- Input:** 4-20 mA
Display: 3½ digits, 1.0" (25.4 mm)
Case: Smooth die-cast aluminum explosion-proof
Power: Loop-powered
Operating Temperature: -40 to 75°C

Options

- Loop-powered backlight

Features

- 1.0 V drop (4.0 V drop with backlight)
- Flanges for wall or pipe mounting
- Easy calibration and installation



Explosion-proof. Complete product approved.

PD6830X

ProtEX-MFI F&I Super Snooper Modbus Scanner

FEET & INCHES
MODBUS SCANNER

Quick Overview

Input: Modbus® RTU

Display: 0.6" (15.24 mm) feet & inches upper display;
7 alphanumeric character lower display 0.4" (10.2 mm)

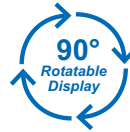
Case: Smooth die-cast aluminum explosion-proof

Power: 9-30 VDC

Operating Temperature: -40 to 75°C

Features

- Master, slave, or snooper mode
- Scan multiple tanks
- SafeTouch® through-glass button programming
- Alphanumeric tag names
- Flanges for wall or pipe mounting
- Backlight standard
- Password protection
- 32-point linearization
- Two open collector alarm outputs
- Tank level bargraph

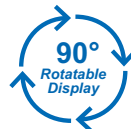


Explosion-proof. Complete product approved.

PD6830X

ProtEX-MS2 Super Snooper Modbus Scanner

MODBUS SCANNER



Quick Overview

Input: Modbus® RTU, pulse

Display: 5-digit 0.7" (17.8 mm) upper display;
7 alphanumeric character 0.4" (10.2 mm) lower display

Case: Smooth die-cast aluminum explosion-proof

Power: 9-30 VDC

Operating Temperature: -40 to 75°C

Features

- Master, slave, or snooper mode
- Scan multiple process variables (PV)
- SafeTouch® through-glass button programming
- Alphanumeric tag names
- Flanges for wall or pipe mounting
- Backlight standard
- Password protection
- 32-point linearization channel
- Two open collector pulse or alarm outputs



Explosion-proof. Complete product approved.

PD8-154

ProtEX-MAX 4-Point Annunciator

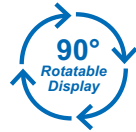
ANNUNCIATORS

Quick Overview

Input: Switch, transistor, logic level
Display: 4 red LED indicators
Case: Smooth die-cast aluminum explosion-proof
Power: 85-265 VAC or 12-36 VDC
Operating Temperature: -40 to 65°C

Features

- 8 field selectable sequences
- 4-point monitoring
- All common ISA sequences
- Multiple-unit first-out indication
- 2 SPDT relays for alarm activated devices
- Silence, acknowledge, and reset functions
- SafeTouch® through-glass button programming
- Flanges for wall or pipe mounting

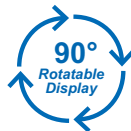


Explosion-proof. See website for details.

PD8-158

ProtEX-MAX 8-Point Annunciator

ANNUNCIATORS



Quick Overview

Input: Switch, transistor, logic level
Display: 4 or 8 red LED indicators
Case: Smooth die-cast aluminum explosion-proof
Power: 85-265 VAC or 12-36 VDC
Operating Temperature: -40 to 65°C

Features

- 8 field selectable sequences
- 8-point monitoring
- All common ISA sequences
- Multiple-unit first-out indication
- 2 SPDT relays for alarm activated devices
- Silence, acknowledge, and reset functions
- SafeTouch® through-glass button programming
- Flanges for wall or pipe mounting



Explosion-proof. See website for details.

PD8-6000

ProtEX-MAX Process Meter

PROCESS

Quick Overview

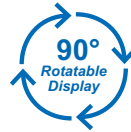
- Input:** 0-20 mA, 4-20 mA; ± 10 VDC (0-5, 1-5, 0-10 V); Modbus PV (slave)
- Display:** Dual-line 6-digit, 0.60" (15 mm) & 0.46" (12 mm)
- Case:** Smooth die-cast aluminum explosion-proof
- Power:** 85-265 VAC or 12/24 VDC option
- Operating Temperature:** -40 to 65°C

Features

- Dual-scale for level applications - single input
- 32-point, square root, or exponential linearization
- Multi-pump alternation control
- Programmable function keys
- Isolated 24 VDC @ 200 mA transmitter power supply
- SafeTouch® through-glass button programming
- 4 on-board digital inputs and outputs
- Modbus® RTU communication protocol
- SunBright display

Options

- 4-20 mA output with isolated 24 VDC @ 40 mA power supply
- 2 or 4 form C internal relays

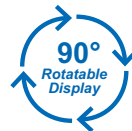


Explosion-proof. See website for details.

PD8-6060

ProtEX-MAX Dual-Input Process Meter

DUAL-INPUT PROCESS



Explosion-proof. See website for details.

Quick Overview

- Input:** Dual 0-20 mA, 4-20 mA; ± 10 VDC (0-5, 1-5, 0-10 V); Modbus PV (slave)
- Display:** Dual-line 6-digit, 0.60" (15 mm) & 0.46" (12 mm)
- Case:** Smooth die-cast aluminum explosion-proof
- Power:** 85-265 VAC or 12/24 VDC option
- Operating Temperature:** -40 to 65°C

Features

- Addition, difference, absolute difference, average, multiplication, division, min of A or B, max of A or B, draw, weighted average, and ratio math functions
- Signal input conditioning for flow & round horizontal tanks
- Multi-pump alternation control
- Isolated 24 VDC @ 200 mA transmitter power supply
- SafeTouch® through-glass button programming
- 4 on-board digital inputs and outputs
- Modbus® RTU communication protocol
- SunBright display

Options

- 4-20 mA output with isolated 24 VDC @ 40 mA power supply
- 2 or 4 form C internal relays

PD8-6080

ProtEX-MAX Super Snooper Modbus Scanner

MODBUS SCANNER

Quick Overview

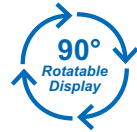
Input: Modbus® RTU;
 Dual 0-20 mA, 4-20 mA; ±10 VDC (0-5, 1-5, 0-10 V)
Display: Dual-line 6-digit, 0.60" (15 mm) & 0.46" (12 mm)
Case: Smooth die-cast aluminum explosion-proof
Power: 85-265 VAC or 12/24 VDC option
Operating Temperature: -40 to 65°C

Features

- Master, slave, or snooper mode
- Scan up to 16 PVs
- Programmable function keys
- SafeTouch® through-glass button programming
- 4 on-board digital inputs and outputs
- SunBright display

Options

- 4-20 mA output with isolated 24 VDC @ 40 mA power supply
- 2 or 4 form C internal relays

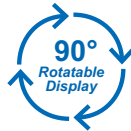


Explosion-proof. See website for details.

PD8-6081

ProtEX-MAX F&I Super Snooper Modbus Scanner

FEET & INCHES
MODBUS SCANNER



Explosion-proof. See website for details.

Quick Overview

Input: Modbus® RTU;
 Dual 0-20 mA, 4-20 mA; ±10 VDC (0-5, 1-5, 0-10 V)
Display: Dual-line 6-digit, 0.60" (15 mm) feet & inches upper display, & 0.46" (12 mm) lower display
Case: Smooth die-cast aluminum explosion-proof
Power: 85-265 VAC or 12/24 VDC option
Operating Temperature: -40 to 65°C

Features

- Master, slave, or snooper mode
- Scan multiple PVs
- Level and volume
- Programmable function keys
- SafeTouch® through-glass button programming
- 4 on-board digital inputs and outputs
- SunBright display

Options

- 4-20 mA output with isolated 24 VDC @ 40 mA power supply
- 2 or 4 form C internal relays

PD8-6100

ProtEX-MAX Strain Gauge Meter

STRAIN GAUGE

Quick Overview

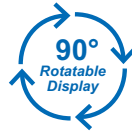
Input: 0-10, 0-20, ± 10 , ± 20 , ± 100 , ± 200 mV
Display: Dual-line 6-digit, 0.60" (15 mm) & 0.46" (12 mm)
Case: Smooth die-cast aluminum explosion-proof
Power: 85-265 VAC or 12/24 VDC option
Operating Temperature: -40 to 65°C

Features

- Selectable 5, 10, or 24 VDC excitation power supply
- Capture or programmable tare feature
- Ratiometric operation
- Dual-scale feature - single input
- Rounding function 1, 2, 5, 10, 20, 50, or 100
- Auto-zero feature eliminates zero drift
- Isolated 24 VDC @ 200 mA transmitter power supply
- SafeTouch® through-glass button programming
- 4 on-board digital inputs and outputs
- Modbus® RTU communication protocol
- SunBright display

Options

- 4-20 mA output with isolated 24 VDC @ 40 mA power supply
- 2 or 4 form C internal relays

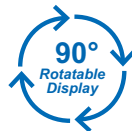


Explosion-proof. See website for details.

PD8-6200

ProtEX-MAX Analog Input Rate/Totalizer

FLOW RATE/TOTAL



Quick Overview

Input: 0-20 mA, 4-20 mA; ± 10 VDC (0-5, 1-5, 0-10 V); Modbus PV (slave)
Display: Dual-line 6-digit, 0.60" (15 mm) & 0.46" (12 mm)
Case: Smooth die-cast aluminum explosion-proof
Power: 85-265 VAC or 12/24 VDC option
Operating Temperature: -40 to 65°C

Features

- Displays rate and total simultaneously
- Count up or down, total & grand total
- Open channel flow with programmable exponent
- 32-point linearization with free software
- Square root extraction
- Total, grand total, or non-resettable grand total
- Isolated 24 VDC @ 200 mA transmitter power supply
- SafeTouch® through-glass button programming
- 4 on-board digital inputs and outputs
- Modbus® RS-485 serial communications
- SunBright display

Options

- 4-20 mA output with isolated 24 VDC @ 40 mA power supply
- 2 or 4 form C internal relays



Explosion-proof. See website for details.

PD8-6210

ProtEX-MAX Analog Input Batch Controller

BATCH CONTROL

Quick Overview

Input: 0-20 mA, 4-20 mA; ± 10 VDC (0-5, 1-5, 0-10 V);
Modbus PV (slave)

Display: Dual-line 6-digit, 0.60" (15 mm) & 0.46" (12 mm)

Case: Smooth die-cast aluminum explosion-proof

Power: 85-265 VAC or 12/24 VDC option

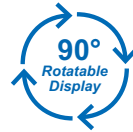
Operating Temperature: -40 to 65°C

Features

- Start, batch, pause, & stop with front buttons
- Display batch total + rate, grand total, batch count or preset
- Single or multi-stage batching with up to 8 relays
- Automatic overflow correction
- Manual control or automatic batching
- Count up or down, total & grand total
- SafeTouch® through-glass button programming
- 4 on-board digital inputs and outputs
- Modbus® RTU communication protocol
- SunBright display

Options

- 4-20 mA output with isolated 24 VDC @ 40 mA power supply
- 2 or 4 form C internal relays



ProtEX
MAX

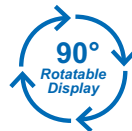


Explosion-proof. See website for details.

PD8-6262

ProtEX-MAX Analog Dual-Input Rate/Totalizer

DUAL-INPUT
RATE / TOTALIZER



ProtEX
MAX



Explosion-proof. See website for details.

Quick Overview

Input: Dual 0-20 mA, 4-20 mA; ± 10 VDC (0-5, 1-5, 0-10 V);
Modbus PV (slave)

Display: Dual-line 6-digit, 0.60" (15 mm) & 0.46" (12 mm)

Case: Smooth die-cast aluminum explosion-proof

Power: 85-265 VAC or 12/24 VDC option

Operating Temperature: -40 to 65°C

Features

- Display rate, total, or grand total for either channel, or math
- Math functions based on rate, total, or grand total
- Addition, difference, absolute difference, average, multiplication, division, min of A or B, max of A or B, draw, weighted average, ratio, and concentration math functions
- Count up or down, total & grand total
- 5, 10 or 24 VDC isolated flowmeter power supply
- SafeTouch® through-glass button programming
- 4 on-board digital inputs and outputs
- Modbus® RTU communication protocol
- SunBright display

Options

- 4-20 mA output with isolated 24 VDC @ 40 mA power supply
- 2 or 4 form C internal relays

PD8-6300

ProtEX-MAX Pulse Input Rate/Totalizer

FLOW RATE/TOTAL

Quick Overview

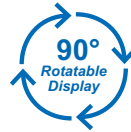
Input: Pulse, open collector, NPN, PNP, TTL, switch contact, sine wave (coil), square wave; Modbus PV (slave)
Display: Dual-line 6-digit, 0.60" (15 mm) & 0.46" (12 mm)
Case: Smooth die-cast aluminum explosion-proof
Power: 85-265 VAC or 12/24 VDC option
Operating Temperature: -40 to 65°C

Features

- Displays rate and total simultaneously
- Count up or down, total & grand total
- 5, 10, or 24 VDC flowmeter power supply
- Gate function for rate display of slow pulse rates
- K-Factor, internal scaling, or external calibration
- Can convert pulse input to an isolated 4-20 mA output
- Isolated 24 VDC @ 200 mA transmitter power supply
- SafeTouch® through-glass button programming
- 4 on-board digital inputs and outputs
- Modbus® RTU communication protocol
- SunBright display

Options

- 4-20 mA output with isolated 24 VDC @ 40 mA power supply
- 2 or 4 form C internal relays

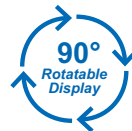


Explosion-proof. See website for details.

PD8-6310

ProtEX-MAX Pulse Input Batch Controller

BATCH CONTROL



Explosion-proof. See website for details.

Quick Overview

Input: Pulse, open collector, NPN, PNP, TTL, switch contact, sine wave (coil), square wave, Modbus PV (slave)
Display: Dual-line 6-digit, 0.60" (15 mm) & 0.46" (12 mm)
Case: Smooth die-cast aluminum explosion-proof
Power: 85-265 VAC or 12/24 VDC option
Operating Temperature: -40 to 65°C

Features

- Start, batch, pause, & stop with front buttons
- Display batch total + rate, grand total, batch count or preset
- Single or multi-stage batching with up to 8 relays
- Automatic overflow correction
- Manual control or automatic batching
- Count up or down, total & grand total
- SafeTouch® through-glass button programming
- 4 on-board digital inputs and outputs
- Modbus® RTU communication protocol
- SunBright display

Options

- 4-20 mA output with isolated 24 VDC @ 40 mA power supply
- 2 or 4 form C internal relays

PD8-6363

ProtEX-MAX Pulse Dual-Input Rate/Totalizer

DUAL-INPUT
RATE / TOTALIZER

Quick Overview

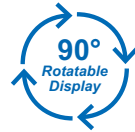
Input: Dual Pulse, open collector, NPN, PNP, TTL, switch contact, sine wave (coil), square wave, Modbus PV (slave)
Display: Dual-line 6-digit, 0.60" (15 mm) & 0.46" (12 mm)
Case: Smooth die-cast aluminum explosion-proof
Power: 85-265 VAC or 12/24 VDC option
Operating Temperature: -40 to 65°C

Features

- Quadrature inputs
- Display rate, total, or grand total for either channel, or math
- Math functions based on rate, total, or grand total
- Addition, difference, absolute difference, average, multiplication, division, min of A or B, max of A or B, draw, weighted average, ratio, and concentration math functions
- Count up or down based on digital input or second input
- 5, 10 or 24 VDC isolated flowmeter power supply
- Convert pulse input or math result to a 4-20 mA output
- SafeTouch® through-glass button programming
- 4 on-board digital inputs and outputs
- SunBright display

Options

- 4-20 mA output with isolated 24 VDC @ 40 mA power supply
- 2 or 4 form C internal relays

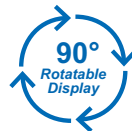


Explosion-proof. See website for details.

PD8-7000

ProtEX-MAX Temperature Meter

TEMPERATURE



Explosion-proof. See website for details.

Quick Overview

Input: Thermocouple J, K, T, E, R, S, B, N, C; RTD 100 Ω Pt, 10 Ω Cu, 120 Ω Ni, 1,000 Ω Pt; Modbus PV (slave)
Display: Dual-line 6-digit: 0.60" (15 mm) & 0.46" (12 mm)
Case: Smooth die-cast aluminum explosion-proof
Power: 85-265 VAC or 12/24 VDC option
Operating Temperature: -20 to 65°C

Features

- 1° or 0.1° resolution
- Averages up to 10 RTD sensors
- Automatic cold junction compensation
- Interlock relays (force on)
- Programmable function keys
- SafeTouch® through-glass button programming
- 4 on-board digital inputs and outputs
- Modbus® RTU communication protocol
- SunBright display

Options

- 4-20 mA output with isolated 24 VDC @ 40 mA power supply
- 2 or 4 form C internal relays

PD8-765

ProtEX-MAX Process & Temperature Meter

PROCESS & TEMP

Quick Overview

Input: Process: 0-20 mA, 4-20 mA;
±10 VDC (0-5, 1-5, 0-10 V)

Temperature: Thermocouple J, K, T, E; RTD 100 Ω Pt

Display: 4-digit, 1.20" (30.5 mm)

Case: Smooth die-cast aluminum explosion-proof

Power: 85-265 VAC or 12-36 VDC option

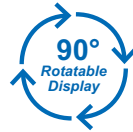
Operating Temperature: 0 to 65°C

Features

- 1° or 0.1° resolution with RTD
- Sunlight readable display
- Maximum/minimum display
- Linear or square root with low-flow cutoff
- Transmitter power option
- SafeTouch® through-glass button programming
- Modbus® RS-485 serial communications
- Flanges for wall or pipe mounting

Options

- 2 relays or 4-20 mA analog output options
- 24 VDC transmitter power supply
- Dual 24 VDC transmitter power supplies



ProtEXTM
MAX



Explosion-proof. See website for details.

**PUMP
CONTROL.com**
by PRECISION DIGITAL

All about pump control

Precision Digital pump control solutions



visit www.pumpcontrol.com

PD940

ConsoliDator 4 Four-Channel Controller (Wall)

Quick Overview

Input: Analog: four 4-20 mA inputs;
Pulse: Four 100 mVp-p to 15 Vp-p,
1 Hz to 10 kHz

Display: 4.75" x 3.50"
(121 mm x 89 mm), 6-digit

Case: NEMA 1, powder-coated steel

Power: 90-264 VAC or 8-30 VDC

Mounting: Wall

Operating Temperature: 0 to 50°C

Features

- Sunlight readable display
- Four pulse and digital inputs
- Nine 10 A relays
- Process/rate & total display
- 32-point linearization
- RS-232 Modbus RTU
- Direct Modbus PV inputs



PD941

ConsoliDator 4 Four-Channel Controller (Panel)

Quick Overview

Input: Analog: four 4-20 mA inputs;
Pulse: Four 100 mVp-p to 15 Vp-p,
1 Hz to 10 kHz

Display: 4.75" x 3.50"
(121 mm x 89 mm), 6-digit

Case: NEMA 1, powder-coated steel

Power: 90-264 VAC or 8-30 VDC

Mounting: Panel

Operating Temperature: 0 to 50°C

Features

- Sunlight readable display
- Four pulse and digital inputs
- Nine 10 A relays
- Process/rate & total display
- 32-point linearization
- RS-232 Modbus RTU
- Direct Modbus PV inputs



PD980

ConsoliDator 8 Eight-Channel Controller (Wall)

Quick Overview

Input: Analog: eight 4-20 mA inputs;
Pulse: Four 100 mVp-p to 15 Vp-p,
1 Hz to 10 kHz

Display: 4.75" x 3.50" (121 mm x 89 mm), 6-digit

Case: NEMA 1, powder-coated steel

Power: 90-264 VAC or 8-30 VDC

Mounting: Wall

Operating Temperature: 0 to 50°C

Features

- Sunlight readable display
- Four pulse and digital inputs
- Nine 10 A relays
- Process/rate & total display
- 32-point linearization
- RS-232 Modbus RTU
- Direct Modbus PV inputs



PD981

ConsoliDator 8 Eight-Channel Controller (Panel)

Quick Overview

Input: Analog: eight 4-20 mA inputs;
Pulse: Four 100 mVp-p to 15 Vp-p,
1 Hz to 10 kHz

Display: 4.75" x 3.50" (121 mm x 89 mm), 6-digit

Case: NEMA 1, powder-coated steel

Power: 90-264 VAC or 8-30 VDC

Mounting: Panel

Operating Temperature: 0 to 50°C

Features

- Sunlight readable display
- Four pulse and digital inputs
- Nine 10 A relays
- Process/rate & total display
- 32-point linearization
- RS-232 Modbus RTU
- Direct Modbus PV inputs



PD650

2.3" (57.3 mm) Large Display Process Meter

PROCESS



Actual Digit Size



Quick Overview

Input: 0-20 mA, 4-20 mA;
±10 VDC (0-5, 1-5, 0-10 V)
Display: 2.3" (57.3 mm), 4½ digits
Case: NEMA 4X aluminum
Power: 115/230 VAC or 22-28 VDC
Operating Temperature: -20 to 65°C

Features

- Programmable exponent for weirs & flumes
- 6-digit display for total
- Two 24 VDC transmitter power supplies

Options

- 200 mA transmitter power supply
- 2 or 4 relays & 4-20 mA output

PD655

1.0" (25.4 mm) Large Display Process Meter

PROCESS

Quick Overview

Input: 0-20 mA, 4-20 mA; ±10 VDC (0-5, 1-5, 0-10 V)
Display: 1.0" (25.4 mm), 4½ digits
Case: NEMA 4X high impact plastic
Power: 115/230 VAC or 22-28 VDC
Operating Temperature: -20 to 65°C

Features

- Programmable exponent for weirs & flumes
- 6-digit display for total
- Two 24 VDC transmitter power supplies
- Pump alternation

Options

- 200 mA transmitter power supply
- 2 or 4 relays & 4-20 mA output



Actual Digit Size



PD540

Nova Series Digital PID Controllers

Quick Overview

Input: Universal process & temperature
Display: Dual, 4-digit
Case: 1/16, 3/16, 1/8, and 1/4 DIN
Power: 100-240 VAC
Operating Temperature: 10 to 50°C

Options

- Digital inputs
- Heating and cooling
- RS-485 serial communications

Features

- Auto-tuning PID
- Easy & quick set point changes
- Relay & analog outputs standard
- High accuracy
- IP55 & IP65 fronts
- Free operating & data logging software



NOVA CE C US

PD550

Nova Series Ramp & Soak Controllers

Quick Overview

Input: Universal process & temperature
Display: Dual, 4-digit
Case: 1/16, 3/16, 1/8, and 1/4 DIN
Power: 100-240 VAC
Operating Temperature: 10 to 50°C

Options

- Digital inputs or digital outputs
- RS-485 serial communications

Features

- Two 15-segment ramp & soak programs
- Relay & analog outputs standard
- High accuracy
- IP55 & IP65 fronts
- Free operating & data logging software



NOVA CE C US

PD560

Nova Series Digital Meters

Quick Overview

Input: Universal process & temperature
Display: Dual, 4-digit
Case: 1/8 and 1/4 DIN
Power: 100-240 VAC
Operating Temperature: 10 to 50°C

Options

- Digital inputs
- RS-485 serial communications

Features

- Relay & analog outputs standard
- High accuracy
- IP55 & IP65 fronts
- Free operating & data logging software



NOVA CE C US

PD570

Nova Series Limit Controllers

Quick Overview

Input: Universal process & temperature
Display: Dual, 4-digit
Case: 1/16 and 1/4 DIN
Power: 100-240 VAC
Operating Temperature: 10 to 50°C

Options

- RS-485 serial communications

Features

- Latching limit relay
- Relay & analog outputs standard
- High accuracy
- IP55 & IP65 fronts
- Free operating & data logging software



NOVA CE C US

PD9500

Precision Calibrator

Quick Overview

Accuracy: 0.0025% of reading (voltage)
Source/read: Thermocouples (13), RTD (9), voltage, current, & pressure (read only)
Interface: Direct keyboard entry, dual displays
Power: 115 or 230 VAC

Features

- Initial calibration accuracy (6 months) to 0.0025% of reading (voltage)
- Custom RTD and SPRT profiles
- Nine setpoints for each output range and type
- Beryllium-copper binding posts reduce thermal EMFs
- RS-232 and IEEE-488 remote control
- Compatible with Fluke Met/Cal[®] software
- Isolated measurement channel
- Includes NIST traceable certificate with calibration data



PDA1500

High VAC/VDC to Logic Level Converter



Quick Overview

Modes: Straight conversion or series break
Mounting: DIN Rail
Number of Channels: 4
Inputs: 85 to 265 VAC/VDC
Outputs: TTL compatible logic (+5 V)
Power: 12/24 VDC

Features

- Multi-unit (cascade) series break configuration
- Input to output can be inverted
- Interfaces to Vigilante[®] II annunciators or PROVu[®] meters
- High electro-optical isolation, input to output

premier products



premier products video
www.predig.com/premier



LMDSFC_I 02/14

PRECISION DIGITAL CORPORATION
89 October Hill Rd • Holliston MA 01746 USA • Tel (800) 343-1001 • Fax (508) 655-8990

**PRECISION
DIGITAL**
www.predig.com